



CLOTHING WITH CONSCIOUS ORIGINS



FALL / WINTER 2025

Nicole Henley, pg. 32

Stellar Pant, pg. 22



North Wind Coat, pg. 38

Twilight Sweater, pg. 36

Roma 5-Pocket Pant, pg. 50



Where heritage meets horizon

At Aventura, we create more than just clothing—we craft stories woven from heritage, sustainability, and the natural beauty of the world around us. Our Fall 2025 collection invites you to journey with us to the rugged landscapes of Montana, an awe-inspiring place that ignites the spirit of adventure and reflects our dedication to authenticity and sustainability.

Authenticity Rooted in Family and Tradition

Aventura is more than a brand; it's a family legacy built over decades. As a family-owned business, we are committed to staying true to our roots, valuing quality over quantity, people over profit, and sustainability over convenience. Our strength lies in our authenticity and our deep connection to the values that have guided us from the beginning.

This season, we've ventured to Montana's Jefferson Valley. Its wide-open skies, towering mountains and unyielding spirit are the perfection reflection of the core of who we are as a brand. At Amish Daily Farm, amidst vast vistas and another family-run business focused on sustainability, we found a location that mirrors our values. Here, every piece of our collection reflects the rugged beauty and enduring spirit of the land, capturing what makes Aventura truly unique.

Our Promise: Timeless Quality, Authentic Connection

As you explore our Fall 2025 collection, you're not just choosing clothing—you're choosing to be part of a story that values authenticity, sustainability, and heritage. You're choosing to wear pieces that are as much about where they come from as where they'll take you.

This is what sets Aventura apart: a brand that stays true to its roots, that forges ahead with purpose, and that invites you to join us in making choices that matter. Together, we'll continue to create not just clothing, but a legacy.

Welcome to the Fall 2025 collection—where heritage meets horizon, and our commitment to Aventura's defining values shines through.

FALL



WINTER

4 our conscious origins

learn about this season's sustainable fibers and the power of Fair Trade

7 sizing & fit

meet the faces of the Fall 2025 collection & review our size chart



8

delivery one

vista

available 7/15/2025



24

dog-walker delivery

howl

available 7/15/2025

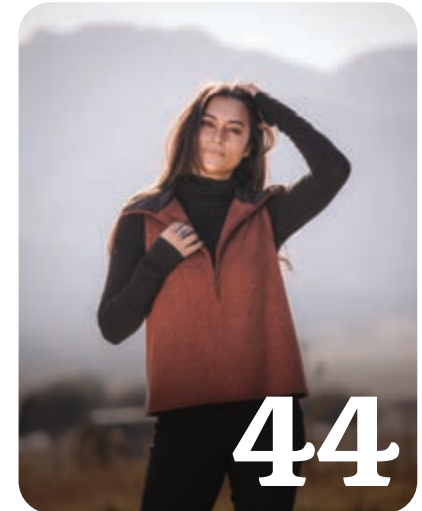


30

delivery two

ember

available 8/15/2025



44

delivery three

forge

available 9/15/2025

54 scarves

available 8/15/2025

58 product index

*easily find your favorite pieces +
check out our terms & conditions*



Cordelia Top, pg. 34



Noella Sweater, pg. 49

the threads of sustainability

At Aventura, our journey toward sustainability began in a place where the unexpected often unfolds—a double-wide trailer in Lubbock, Texas. In 2002, our CEO and President, John, attended the inaugural meeting of the Organic Exchange. It was here, amidst the vast Texas plains, that he encountered the transformative power of sustainable fibers. Joining forces with industry leaders like Nike, Patagonia, and Timberland, John discovered a shared vision for a greener planet and a future woven with eco-friendly textiles.

Inspired by this groundbreaking community, Aventura embraced sustainability from its very beginnings. What seemed like a daunting challenge—transforming conventional textiles into sustainable alternatives—became a tangible goal. Every step of the way, we took bold risks, building a supply chain that could support this new wave of consumer demand.

Today, we proudly continue this journey with our Fall 2025 collection, reflecting our unwavering commitment to the environment. This collection is crafted using six sustainable fibers, each chosen for its role in creating garments that are as eco-friendly as they are beautiful. These fibers embody our dedication to quality, sustainability, and a legacy of responsible fashion.

Our design process starts with a vital question: “Where will these clothes end up?”

We are committed to creating garments from natural, low-impact sources and partnering with factories renowned for their expertise in sustainable textiles. From organic cotton to recycled fibers, each component of our collection is designed to make a positive impact.

As you explore our Fall 2025 collection, we invite you to join us in celebrating a future where every thread tells a story of sustainability and every garment reflects our commitment to a better planet.

Check out the incredible fibers that help make up our Fall / Winter 2025 collection



Organic Cotton

Organic cotton is a superhero fiber—it is grown using methods that protect the environment, like crop rotation and natural pest control, without synthetic pesticides or fertilizers. This process promotes healthier soils, conserves water, and supports biodiversity. Choosing organic supports farming practices that work in harmony with nature for a cleaner, greener future.

Fiber Benefits

- gentle on sensitive skin
- strong & durable fibers
- soft & breathable



Recycled Polyester

Recycled polyester is made from post-consumer materials like plastic bottles, reducing waste and the need for new resources. The process involves breaking down plastics and spinning them into durable fibers, using less energy and water than virgin polyester. Recycled polyester is durable, lightweight, wrinkle-resistant, and easy to maintain.

Fiber Benefits

- lightweight & durable
- moisture-wicking
- quick-drying & wrinkle-resistant



Merino Wool

Merino wool is prized for its ultra-soft feel, lightweight warmth, and natural breathability. It's moisture-wicking, temperature-regulating, and odor-resistant, making it perfect for all seasons.

Merino wool is fine and non-itchy, providing comfort directly against the skin while offering sustainability and performance for everyday wear or outdoor adventures.

Fiber Benefits

- temperature-regulating
- natural wicking properties
- odor-resistant



TENCEL™ Modal

TENCEL™ Modal offers luxurious softness and breathability with a low environmental impact. Made from sustainably sourced wood, it has a 5.4 times lower environmental footprint than conventional modal. Its eco-friendly process recaptures up to 95% of solvents, minimizing waste and reducing harm to surrounding ecosystems while delivering lasting comfort.

Fiber Benefits

- incredibly soft & breathable
- lightweight with beautiful drape
- moisture-wicking



TENCEL™ Lyocell

TENCEL™ Lyocell is made from wood pulp sourced from certified, responsibly managed forests. The closed-loop production process recycles over 99% of water and solvents, minimizing waste and environmental impact. This eco-conscious approach delivers a strong, breathable, and biodegradable fabric, perfect for sustainable fashion without compromise.

Fiber Benefits

- super soft & gentle on skin
- strong yet lightweight
- wrinkle-resistant with beautiful drape



Lenzing™ ECOVERO™ Viscose

Lenzing™ ECOVERO™ Viscose is derived from certified renewable wood sources. It's produced using up to 50% less water and emissions than conventional viscose. With a transparent supply chain and eco-conscious production methods, ECOVERO™ delivers a biodegradable fabric with a significantly lower environmental impact, supporting sustainable fashion choices.

Fiber Benefits

- lightweight & breathable
- incredibly soft but durable
- wrinkle-resistant



Crispin Top, pg. 33

Roma 5-Pocket Pant, pg. 50



fair trade: a voice for women

At Aventura, our commitment to Fair Trade is more than a principle; it's a reflection of our values and our dedication to creating a positive impact. When we visit our partner factories, we witness firsthand how fair wages and community premiums transform lives and uplift entire communities. We believe in working with partners where we would feel proud and secure ourselves, ensuring that workers are treated with respect and fairness.

One of the most compelling aspects of Fair Trade is its impact on women. In garment factories, women make up around 80% of the workforce. In many conventional factories, women face significant barriers—discrimination, exclusion from decision-making, and a lack of support for new mothers, such as access to childcare. These challenges often trap them in cycles of poverty and limit their opportunities for independence.

Fair Trade USA™ changes this narrative. By empowering women to have a say in how community funds are used, Fair Trade ensures that they benefit from programs such as childcare facilities, transportation, cultural celebrations, medical services, and savings accounts. These initiatives not only enhance their lives but also foster a sense of community and security.

Choosing Fair Trade is a choice that resonates with consumers—30% are more likely to support Fair Trade products. It's a commitment to ethical practices that benefits both the workers who craft our clothing and the customers who choose to make a difference with their purchases.

Join us in supporting Fair Trade, where every garment represents a step toward a fairer, more equitable world.



Keep an eye out for the Fair Trade Certified™ seal throughout this season's book to easily identify ethically produced styles.

FALL



WINTER

Meet the women wearing the Aventura Fall / Winter 2025 Collection!

We hope that by sharing the height of the models and the size of clothing they are wearing, it will illuminate how products will fit and make your ordering easier. Don't hesitate to reach out to your sales rep or our customer service team for more specifics about fit.



Alli

5'6 | WEARS SIZE: 6/S



Demerey

5'5 | WEARS SIZE: 6/S



Karissa

5'4 | WEARS SIZE: 4/S



Khalilah

5'6 | WEARS SIZE: 4/XS



Kirsty

5'10 | WEARS SIZE: 4/S



Krystal

5'7 | WEARS SIZE: 6/S

Special thanks to our friends and hosts at:



	XS		S		M		L		XL	XXL
Size	0	2	4	6	8	10	12	14	16	18
Bust	33½	34½	35½	36½	37½	39	40½	42	43½	46
Waist	25½	26½	27½	28½	29½	31	32½	34	35½	38
Hip	36½	37½	38½	39½	40½	42	43½	45	46½	49
Front standard rise (including waistband):						9 - 9½				
Front mid-rise (including waistband):						10 - 10½				

Woods Moto Jacket, pg. 21

Homecoming Sweater, pg. 50

Lucia Pant, pg. 22

Solstice Fleece Vest, pg. 20

Crystal Henley, pg. 13

Roma 5-Pocket Pant, pg. 50



Twiggy Sweater, pg. 18

Stellar Pant, pg. 22



vista

delivery one

available 7/15/2025

Like the promise of dawn on the horizon, our first delivery, Vista, celebrates the excitement of looking ahead to new possibilities.

Vista is more than just a view—it's a vision for the future, a chance to chart your course, make plans, and raise a glass to the endless opportunities waiting just beyond the horizon.

As we set our sights on what's next, we embrace the thrill of the journey ahead, ready to welcome whatever comes our way.

Pine Vest, pg. 17

Amaryllis Top, pg. 13

Stellar Pant, pg. 22





Solstice Bomber Jacket, pg. 20

Stellar Pant, pg. 22



Comfy 1/4 Zip, pg. 19

Aurora Pant, pg. 40



Fleur de Lis Top, pg. 15

Aurora Skirt, pg. 41

M12991 Ambrosia Top



55 organic cotton / 45 recycled polyester
single jersey + all-over burnout

XS	S	M	L	XL	XXL
----	---	---	---	----	-----

- crew neck long sleeve
- rib knit neck trim

Premier MSRP \$55.00 ||
Standard MSRP \$49.00 || Cost \$24.50



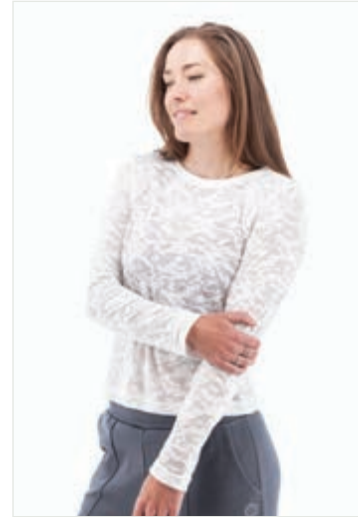
27 Black



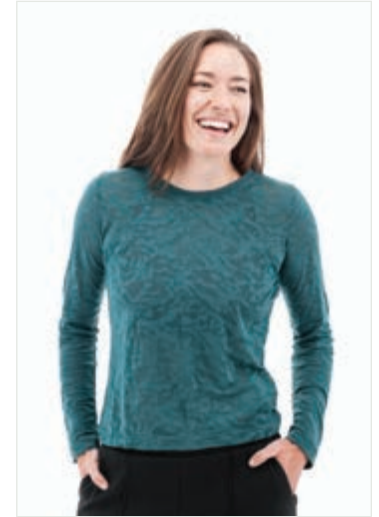
317 Burnt Henna



587 Ombre Blue



808 Snow White



921 Atlantic Deep

M21391 Ambrosia Turtleneck



55 organic cotton / 45 recycled polyester
single jersey + all-over burnout

XS	S	M	L	XL	XXL
----	---	---	---	----	-----

- center back seam
- ruched turtleneck

Premier MSRP \$55.00 ||
Standard MSRP \$49.00 || Cost \$24.50



27 Black



317 Burnt Henna



587 Ombre Blue



808 Snow White



921 Atlantic Deep

M22099AQ Amaryllis Top



57 organic cotton / 38 Tencel™ modal / 5 elastane, slub single jersey with all-over print

XS	S	M	L	XL	XXL
----	---	---	---	----	-----

- full button front knit shirt
- smocking on front & back yoke
- button closure cuffs

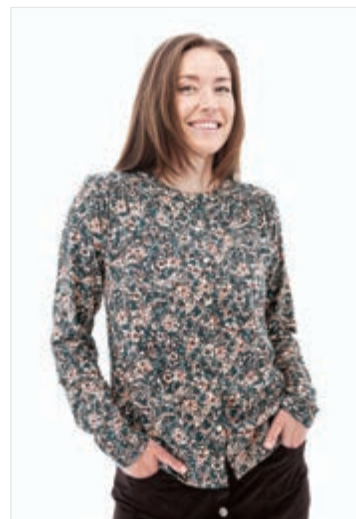
Premier MSRP \$75.00 ||
Standard MSRP \$69.00 ||
Cost \$34.50



27 Black



587 Ombre Blue



921 Atlantic Deep

M22599 Crystal Henley



57 organic cotton / 38 Tencel™ modal / 5 elastane, slub single jersey

XS	S	M	L	XL	XXL
----	---	---	---	----	-----

- scoop neck henley
- picotting on collar and center front placket
- crochet top applied on sleeves
- sweep has twill tape side vents with buttons

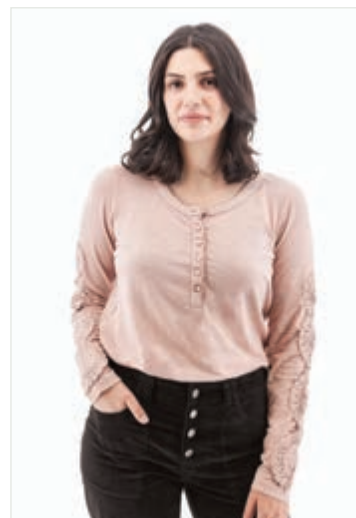
Premier MSRP \$79.00 ||
Standard MSRP \$75.00 ||
Cost \$37.50



136 Sassafras



192 Medieval Blue



440 Adobe Rose



921 Atlantic Deep

M22257 Nevis Top



60 organic cotton / 40 Tencel™ lyocell rib knit

Made in a Fair Trade Certified™ factory

XS	S	M	L	XL	XXL
----	---	---	---	----	-----

- rib knit henley with deep v-neck & 3 buttons
- embroidery around neckline
- shirttail hemline

Premier MSRP \$65.00 || Standard MSRP \$59.00 || Cost \$29.50



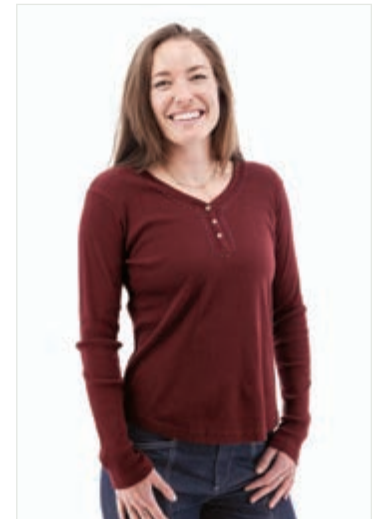
27 Black



808 Snow White



830 Flintstone



989 Cabernet

J30218AW Eve Popover Top



100% Lenzing™ EcoVero™ viscose, twill weave plaid yarn-dye

Made in a Fair Trade Certified™ factory

XS	S	M	L	XL	XXL
----	---	---	---	----	-----

- pop-over with collar
- v-neck
- cuffs with button closure
- side slits & shirttail hemline

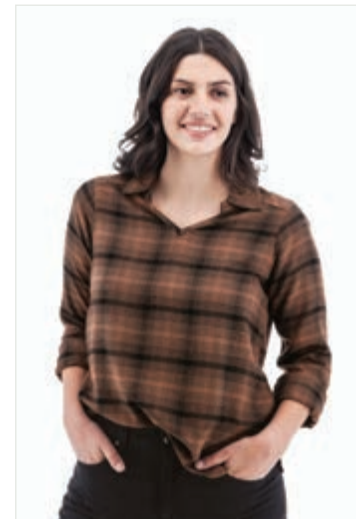
Premier MSRP \$95.00 || Standard MSRP \$89.00 || Cost \$44.50



136 Sassafras



587 Ombre Blue



909 Acorn

J29614AS Fleur de Lis Top



100% organic cotton lawn

Made in a Fair Trade Certified™ factory

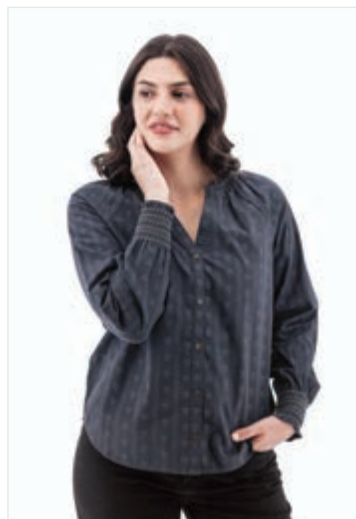
XS	S	M	L	XL	XXL
----	---	---	---	----	-----

- full button front long sleeve raglan top
- smocked collar and cuffs
- shirttail hemline

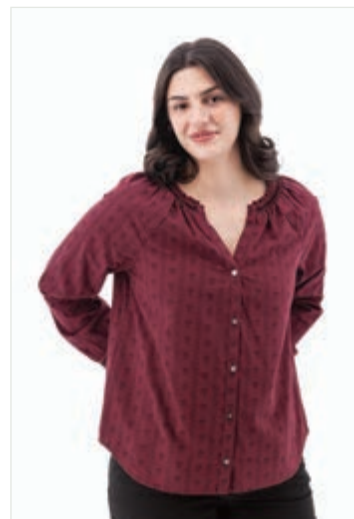
Premier MSRP \$89.00 ||
Standard MSRP \$85.00 ||
Cost \$42.50



107 Chestnut



587 Ombre Blue



989 Cabernet

J291282CU Autumn Top



100% Lenzing™ EcoVero™ viscose

Made in a Fair Trade Certified™ factory

XS	S	M	L	XL	XXL
----	---	---	---	----	-----

- notch neck top with mini ruffle at neck
- pintucks on front
- back yoke with slight ruching
- elasticized cuffs

Premier MSRP \$85.00 ||
Standard MSRP \$79.00 ||
Cost \$39.50



587 Ombre Blue



1332 Harvest Gold

P865282 • P865282CU Autumn Dress



100% Lenzing™ EcoVero™ viscose

Made in a Fair Trade Certified™ factory

XS	S	M	L	XL	XXL
----	---	---	---	----	-----

- 46.5" length
- midi length dress with full button front and tiered sweep
- waistband created from alternating pintucks
- hip pockets
- raglan shaped bishop sleeves

Premier MSRP \$129.00 ||
Standard MSRP \$119.00 ||
Cost \$59.50



P865282 • 27 Solid Black



P865282CU • 587 Ombre Blue



P865282CU • 1332 Harvest Gold

P88399 • P88399AQ Amaryllis Dress

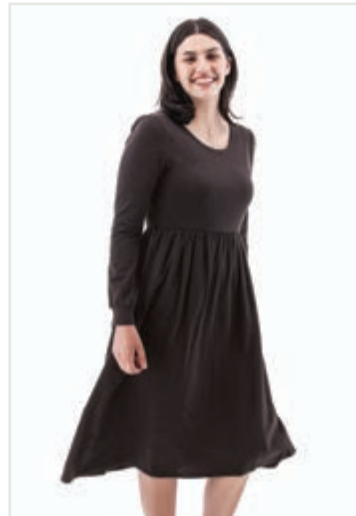


57 organic cotton 38 Tencel™ modal / 5 elastane, slub single jersey, both solid and all-over print

XS	S	M	L	XL	XXL
----	---	---	---	----	-----

- 44" length
- fit & flare midi length dress with scoop neck
- bishop sleeves
- double layer bodice
- hip pockets
- skirt is ruched at waist

Premier MSRP \$89.00 ||
Standard MSRP \$85.00 ||
Cost \$42.50



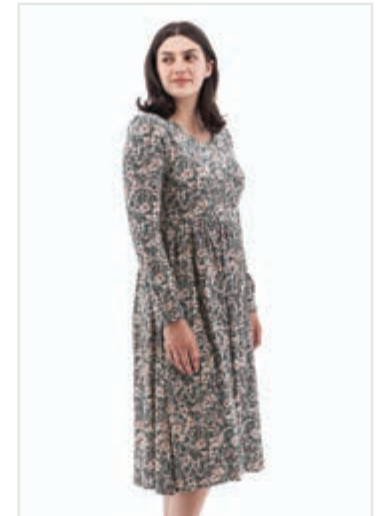
P88399 • 1342 Solid Black Bean



P88399AQ • 27 Black



P88399AQ • 587 Ombre Blue



P88399AQ • 921 Atlantic Deep

N537683 Cascade Cardigan



60 organic cotton / 40 viscose, 5gg

Made in a Fair Trade Certified™ factory

XS	S	M	L	XL	XXL
----	---	---	---	----	-----

- updated Delaney Cardigan
- 22.5" body length
- cable knit raglan sleeve cardigan
- button front
- relaxed fit
- fully fashioned

Premier MSRP \$109.00 ||
 Standard MSRP \$99.00 ||
 Cost \$49.50



336 Natural



520 Charcoal Grey



1064 Egret

N522849 Pine Vest

40 viscose / 30 nylon /
 27 polyester / 3 cashmere, 7gg

XS	S	M	L	XL	XXL
----	---	---	---	----	-----

- rib knit vest with mock collar
- dolman style armhole

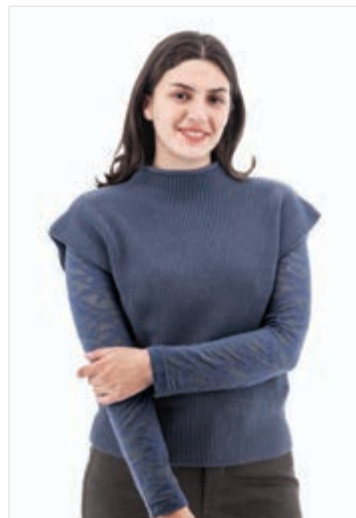
Premier MSRP \$95.00 ||
 Standard MSRP \$89.00 ||
 Cost \$44.50



440 Adobe Rose



520 Charcoal Grey



587 Ombre Blue

N529719 Elsa Sweater

33 polyester / 25 nylon / 25 acrylic / 15 wool / 2 spandex, 7gg

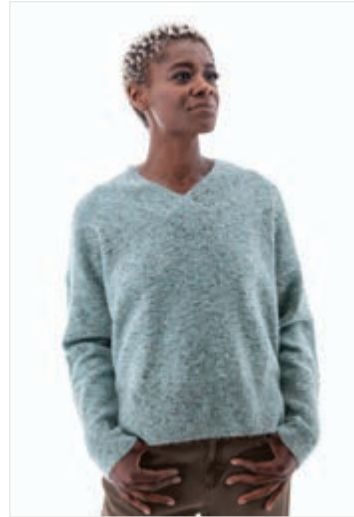
XS	S	M	L	XL	XXL
----	---	---	---	----	-----

- relaxed fit v-neck sweater
- drop shoulder
- tall rib knit cuffs and hem with slightly longer back length and side slits
- fully fashioned

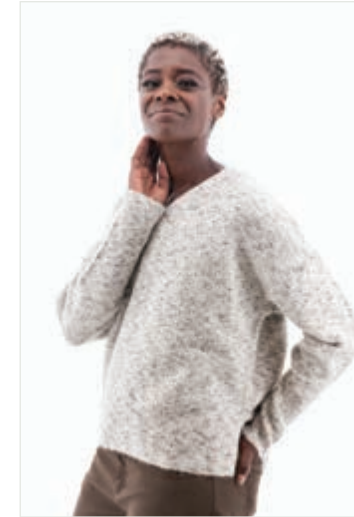
 **Premier MSRP \$139.00 ||**
Standard MSRP \$125.00 ||
Cost \$62.50



520 Charcoal Grey



610 Teal



1064 Egret


N533630 Twiggy Sweater



100% organic cotton, 12gg

XS	S	M	L	XL	XXL
----	---	---	---	----	-----

- mixed knit, boat neck sweater
- rib knit detail at neck and shoulders, cuffs and sweep
- fully fashioned

 **Premier MSRP \$109.00 ||**
Standard MSRP \$99.00 ||
Cost \$49.50



317 Burnt Henna



587 Ombre Blue



1332 Harvest Gold

M18332 • M18332CY Luscious Shirt



61 recycled polyester / 33 rayon / 6 spandex, yarn-dye twill weave fleece

XS	S	M	L	XL	XXL
----	---	---	---	----	-----

- 28" body length
- boyfriend fit
- fleece shirt with full button placket & cuffs
- single chest pocket on solid colors only

Premier MSRP \$129.00 || Standard MSRP \$119.00 || Cost \$59.50



M18332 • 440 Solid Adobe Rose



M18332 • 587 Solid Ombre Blue



M18332CY • CY30 Rose



M18332CY • CY09 Ombre Blue

M192880 Comfy 1/4 Zip



100% recycled polyester

XS	S	M	L	XL	XXL
----	---	---	---	----	-----

- pebble-style fleece pullover
- quarter zip
- satin trim at center front placket, chest trim, side vents and elasticized cuffs

Premier MSRP \$95.00 || Standard MSRP \$89.00 || Cost \$44.50



440 Adobe Rose



909 Acorn



967 Dapple Gray

0306845 Solstice Bomber Jacket

100% polyester diamond debossed sherpa fleece

XS	S	M	L	XL	XXL
----	---	---	---	----	-----

- bomber style jacket
- full zip front
- rib knit trim at cuffs, pocket openings and sweep
- grosgrain tape at center front placket & shoulder detail

Premier MSRP \$125.00 || Standard MSRP \$119.00 || Cost \$59.50



27 Black



107 Chestnut



587 Ombre Blue



1064 Egret

0315845 Solstice Fleece Vest

100% polyester diamond debossed sherpa fleece

XS	S	M	L	XL	XXL
----	---	---	---	----	-----

- 32.5" longer vest
- full zip front with snaps on collar
- internal waistband adjustment
- rib knit on pocket welts & inside collar

Premier MSRP \$109.00 || Standard MSRP \$99.00 || Cost \$49.50



27 Black



107 Chestnut



587 Ombre Blue



1064 Egret

0311531 Leaf Peeper Jacket



100% recycled polyester taffeta, matte finish with DWR + unquilted self lining

Made in a Fair Trade Certified™ factory

XS	S	M	L	XL	XXL
----	---	---	---	----	-----

- 24.5" body length
- full button front quilted jacket
- inner and outer recycled polyester taffeta
- welted hip pockets
- twill tape details on neck, placket and cuffs

Premier MSRP \$139.00 ||
Standard MSRP \$129.00 ||
Cost \$64.50



27 Black



136 Sassafras



587 Ombre Blue

030831CW Woods Moto Jacket

90 polyester / 10 wool +
 back: 65 polyester / 35 rayon

XS	S	M	L	XL	XXL
----	---	---	---	----	-----

- moto style fleece jacket
- wool look outer, jersey inner
- front zip
- back waistband and princess seams with kick pleats for shaping
- hip pockets

Premier MSRP \$199.00 ||
Standard MSRP \$189.00 ||
Cost \$94.50



922 Dark Navy

L237296 Stellar Pant



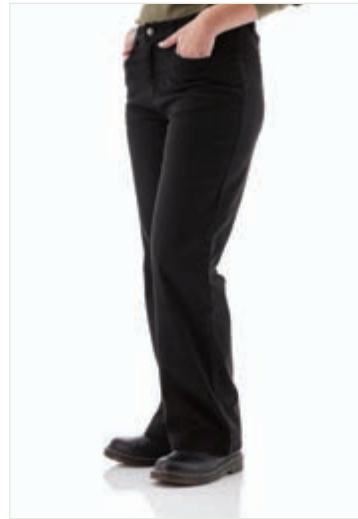
100% cotton, twill one side peached

Made in a Fair Trade Certified™ factory

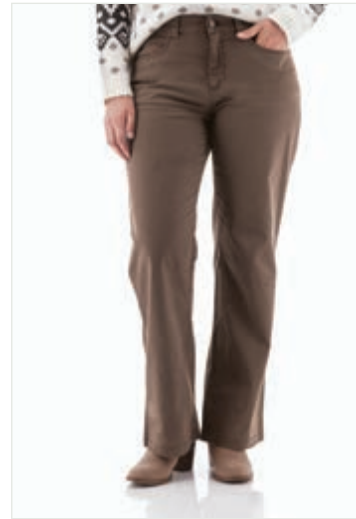
0	2	4	6	8	10	12	14	16
---	---	---	---	---	----	----	----	----

- 30" inseam,
- 20" leg opening (size 8)
- mid-weight canvas pant with wide leg
- front pockets & back welt pockets

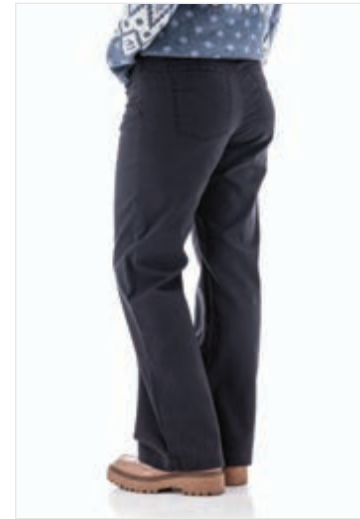
Premier MSRP \$99.00 ||
Standard MSRP \$95.00 ||
Cost \$47.50



27 Black



107 Chestnut



587 Ombre Blue

L234425 Lucia Pant



100% organic cotton, indigo wash

Made in a Fair Trade Certified™ factory

0	2	4	6	8	10	12	14	16
---	---	---	---	---	----	----	----	----

- 30" inseam
- vertical seams on front and back
- front drop in pockets
- back yoke

Premier MSRP \$95.00 ||
Standard MSRP \$89.00 ||
Cost \$44.50



805 Denim



Autumn Dress, pg. 16



Elsa Sweater, pg. 18

Stellar Pant, pg. 22

Dog-Walker Top, pg. 26

Dog-Walker Legging, pg. 28

Weekend Dress, pg. 28



Dog-Walker Vest, pg. 27

Amaryllis Top, pg. 13

Weekend Dog-Walker Pant, pg. 29

Comfy Hoodie, pg. 27

Weekend Dog-Walker Pant, pg. 29



Dog-Walker Print Top, pg. 26

Dog-Walker Jogger, pg. 29



Dog-Walker Top, pg. 26

Dog-Walker Legging, pg. 28



howl

dog-walker delivery

available 7/15/2025

Answer the call of the great outdoors with our special delivery, Howl.

Like an echo that resonates over open landscapes, Howl embodies more than just adventure—it's an invitation to explore without limits.

This delivery showcases our beloved Dog-Walker collection of fleece styles, crafted for those ready to stride boldly into the wild.



Amaryllis Top, pg. 13

Dog-Walker Vest, pg. 27

Weekend Dog-Walker Pant, pg. 29

M107998 • M107998CZ Dog-Walker Top

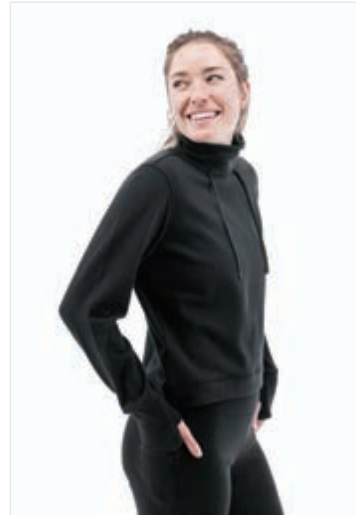


45 recycled polyester / 35 cotton /
17 polyester / 3 spandex with
velour polyester pile back

XS	S	M	L	XL	XXL
----	---	---	---	----	-----

- 24" length
- mock neck pullover sweatshirt
- velvety-soft fleece inner
- thumb-holes on cuffs

Premier MSRP \$99.00 ||
Standard MSRP \$95.00 ||
Cost \$47.50



M107998 • 27 Black



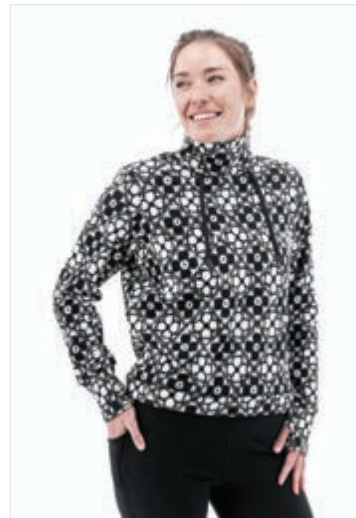
M107998 • 136 Sassafras



M107998 • 587 Ombre Blue



M107998 • 808 Snow White



M107998CZ • 27 Black Print



M107998CZ • 136 Sassafras Print



M107998CZ • 587 Ombre Blue Print

M221880 Comfy Hoodie



100% recycled polyester

XS	S	M	L	XL	XXL
----	---	---	---	----	-----

- pebble-style fleece hoodie
- drop shoulders
- rib knit trim at zip placket, hood edge and tall cuffs
- thumbholes
- shirttail hemline

Premier MSRP \$109.00 ||
Standard MSRP \$99.00 ||
Cost \$49.50



440 Adobe Rose



808 Snow White



830 Flintstone

0275998 Dog-Walker Vest



45 recycled polyester / 35 cotton /
 17 polyester / 3 spandex with velour
 polyester pile back

XS	S	M	L	XL	XXL
----	---	---	---	----	-----

- vest with stand collar
- zip front
- quilted front and back yokes
- quilted patch pockets with zip closure
- wearer's right pocket has "doggie treat pocket"
- inner is a velvety-soft fleece

Premier MSRP \$109.00 ||
Standard MSRP \$99.00 ||
Cost \$49.50



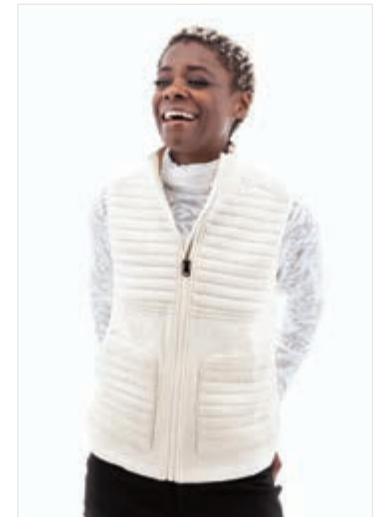
27 Black



136 Sassafras



587 Ombre Blue



808 Snow White

P871998 Weekend Dress



45 recycled polyester / 35 cotton /
17 polyester / 3 spandex with velour
polyester pile back

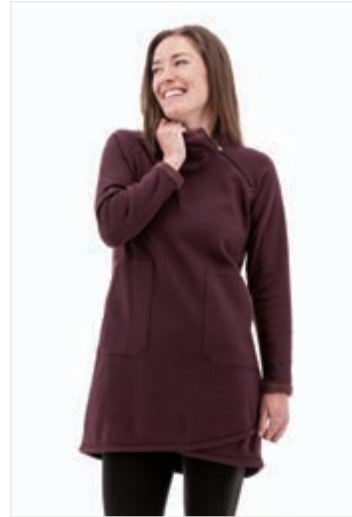
XS	S	M	L	XL	XXL
----	---	---	---	----	-----

- 36.5" back length | front is shorter due to tulip hemline
- pullover dress with side zipper in raglan armhole
- mock collar with velvety inner rolled to the outside
- patch pockets

Premier MSRP \$105.00 ||
Standard MSRP \$95.00 ||
Cost \$47.50



27 Black



136 Sassafras



587 Ombre Blue

L213998 Dog-Walker Legging



45 recycled polyester / 35 cotton /
17 polyester / 3 spandex with velour
polyester pile back

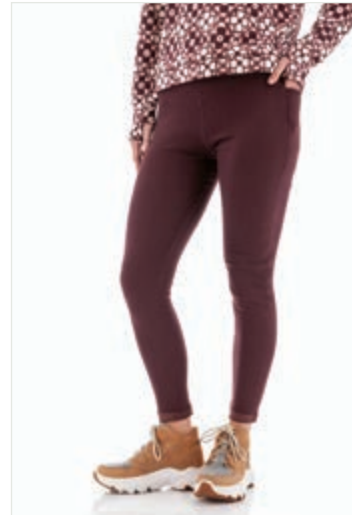
XS	S	M	L	XL	XXL
----	---	---	---	----	-----

- 29" inseam
- velvety fleece lined legging with two side pockets
- gusset

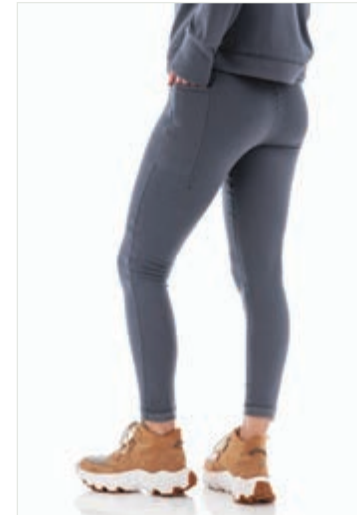
Premier MSRP \$89.00 ||
Standard MSRP \$85.00 ||
Cost \$42.50



27 Black



136 Sassafras



587 Ombre Blue

L240998 Weekend Dog-Walker Pant

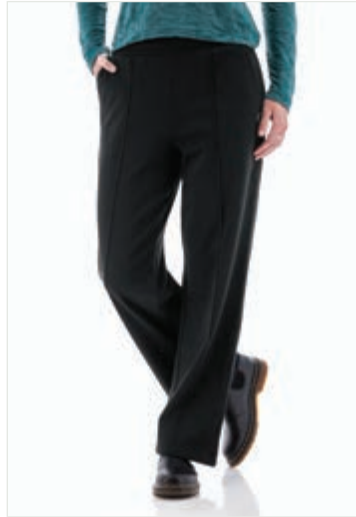


45 recycled polyester / 35 cotton /
17 polyester / 3 spandex with velour
polyester pile back

XS	S	M	L	XL	XXL
----	---	---	---	----	-----

- 29" inseam
- pull on fleece pant with wide leg
- seam on front of legs
- hip pockets
- internal drawcord

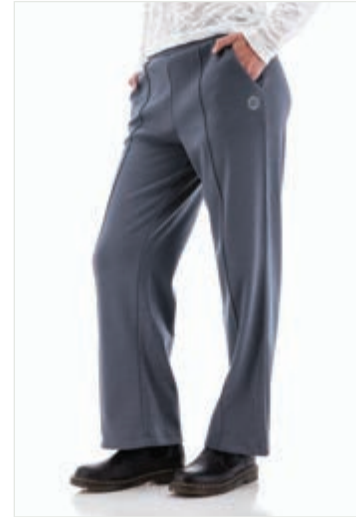
Premier MSRP \$95.00 ||
Standard MSRP \$89.00 ||
Cost \$44.50



27 Black



136 Sassafras



587 Ombre Blue

L238998 Dog-Walker Jogger



45 recycled polyester / 35 cotton /
17 polyester / 3 spandex with velour
polyester pile back

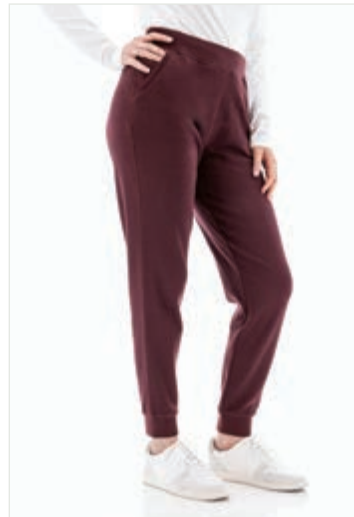
XS	S	M	L	XL	XXL
----	---	---	---	----	-----

- 29" inseam
- velvety fleece lined jogger with two side pockets
- rib knit trim details at waistband, leg openings and pocket openings

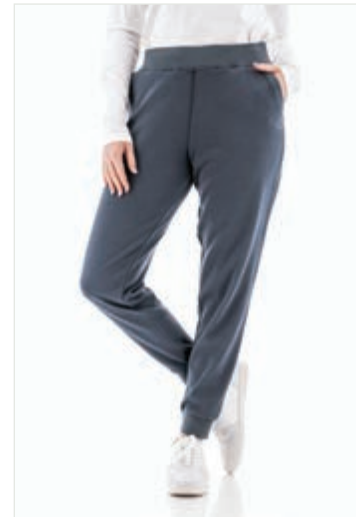
Premier MSRP \$95.00 ||
Standard MSRP \$89.00 ||
Cost \$44.50



27 Black



136 Sassafras



587 Ombre Blue

Twilight Sweater, pg. 36

Roma 5-Pocket Pant, pg. 50

Halcyon Sweater, pg. 37

Lucia Pant, pg. 22

Nordic Sweater, pg. 36

Aurora Skirt, pg. 41



Gramercy Shirt, pg. 34

Aurora Pant, pg. 40



Nicole Henley, pg. 32

Frost Flannel Shirt, pg. 35

Aurora Pant, pg. 40



ember

delivery two

available 8/15/2025

Feel the golden warmth of fall with our second delivery, Ember.

Like the embers of a sunset setting the tops of blue mountains aglow, with golden leaves and long grasses illuminated in the fading light, Ember captures the fleeting beauty of nature's most radiant moments.

This delivery is for those ready to embrace the season's brilliance and move forward with a renewed spark.

Equinox Fleece, pg. 37

Dog-Walker Jogger, pg. 29

Patchwork Print Scarf, pg. 57

Crispin Top, pg. 33

Aurora Pant, pg. 40



Sylvan Top, pg. 33

Lucia Pant, pg. 22

M14657 Tiffi Cowl Neck




60 organic cotton / 40 Tencel™
lyocell thermal and jersey

Made in a Fair Trade Certified™ factory

XS	S	M	L	XL	XXL
----	---	---	---	----	-----

- raglan sleeve cowl neck top
- jersey trim on cuffs, rounded sweep and inside of collar

 **Premier MSRP \$75.00 ||**
Standard MSRP \$69.00 ||
Cost \$34.50



113 Rosewood



587 Ombre Blue



1064 Egret



1121 Dusky Green

M13357XW Nicole Henley




60 organic cotton / 40 Tencel™
lyocell thermal yarn-dye stripe +
rib knit yarn-dye stripe

Made in a Fair Trade Certified™ factory

XS	S	M	L	XL	XXL
----	---	---	---	----	-----

- thermal knit yarn-dye striped
button front henley
- rib knit cuffs & neck details in
coordinating stripe

 **Premier MSRP \$85.00 ||**
Standard MSRP \$79.00 ||
Cost \$39.50



113 Rosewood



587 Ombre Blue



1121 Dusky Green

M21057AT Sylan Top



60 organic cotton / 40 Tencel™ lyocell thermal + rib knit

Made in a Fair Trade Certified™ factory

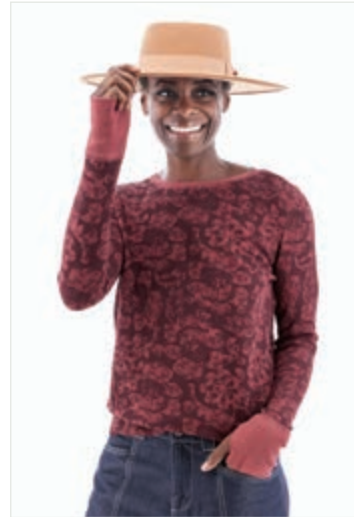
XS	S	M	L	XL	XXL
----	---	---	---	----	-----

- crew neck waffle long sleeve
- center back seam detail
- rib knit trim at neck and cuffs
- shirttail hemline
- thumbholes

Premier MSRP \$75.00 ||
Standard MSRP \$69.00 ||
Cost \$34.50



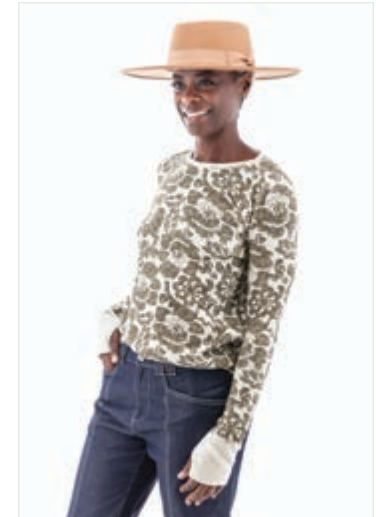
27 Black



136 Sassafras



587 Ombre Blue



1121 Dusky Green

M21609 Crispin Top



48 organic cotton / 47 Tencel™ lyocell / 5 spandex black slub jersey

Made in a Fair Trade Certified™ factory

XS	S	M	L	XL	XXL
----	---	---	---	----	-----

- updated Rafferty Top
- notch neckline
- raglan sleeves with cuff embroidery
- embroidery detail also at center front and neck trim
- shirttail hemline

Premier MSRP \$75.00 ||
Standard MSRP \$69.00 ||
Cost \$34.50



136 Sassafras



264 Charcoal



308 Olive Night



830 Flintstone

J294151 Cordelia Top



100% Tencel™ Modal jacquard

Made in a Fair Trade Certified™ factory

XS	S	M	L	XL	XXL
----	---	---	---	----	-----

- crew neck top with smocking on front and back yokes
- smocked cuff with slight bubble sleeve
- full button front
- shirttail hemline

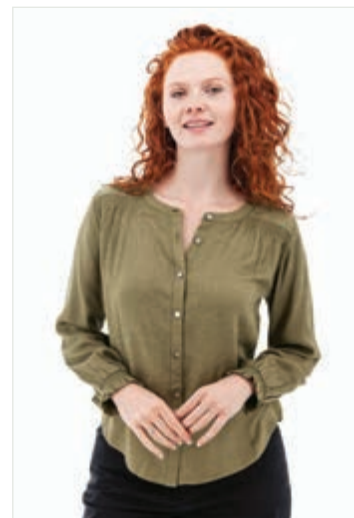
Premier MSRP \$109.00 ||
Standard MSRP \$99.00 ||
Cost \$49.50



587 Ombre Blue



1064 Egret



1121 Dusky Green

J29956AR Gramercy Shirt



100% organic cotton doubleweave with all-over print, garment dye

Made in a Fair Trade Certified™ factory

XS	S	M	L	XL	XXL
----	---	---	---	----	-----

- full button front shirt
- coordinating print detail at center front placket, inside collar band, inside back yoke facing, cuff facing and sleeve plackets
- decorative pick stitching on collar and pocket hem
- shirttail hemline

Premier MSRP \$95.00 ||
Standard MSRP \$89.00 ||
Cost \$44.50



113 Rosewood



830 Flintstone



1121 Dusky Green

J27415AU Frost Flannel Shirt



100% organic cotton, twill weave, brushed

Made in a Fair Trade Certified™ factory

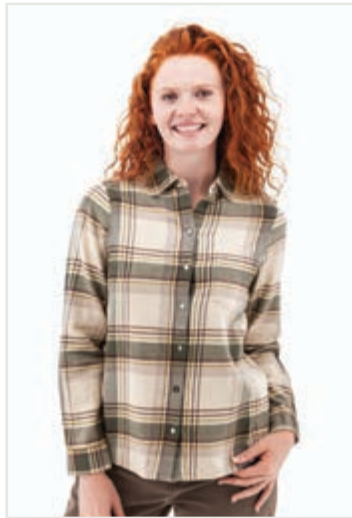
XS	S	M	L	XL	XXL
----	---	---	---	----	-----

- updated Braelin Shirt
- button-front center placket
- cuffs with single button closure
- single chest pocket
- decorative pick stitching on collar and pocket hem
- shirrtail hemline

Premier MSRP \$95.00 ||
Standard MSRP \$89.00 ||
Cost \$44.50



587 Ombre Blue



1064 Egret



Frost Flannel Shirt, pg. 35

Tiffi Cowl Neck, pg. 32

Stellar Pant, pg. 22



Cordelia Top, pg. 34

Roma 5-Pocket Pant, pg. 50

N526279 Nordic Sweater



76 acrylic / 24 nylon, 7gg

Made in a Fair Trade Certified™ factory

XS	S	M	L	XL	XXL
----	---	---	---	----	-----

- crew neck
- raglan sleeve fair isle sweater
- rib knit trim at neck, cuffs and sweep
- fully fashioned

Premier MSRP \$139.00 ||
Standard MSRP \$129.00 ||
Cost \$64.50



308 Olive Night



587 Ombre Blue



989 Cabernet

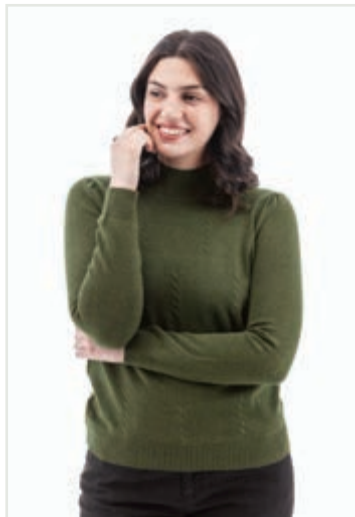
N540849 Twilight Sweater

40 viscose / 30 nylon / 27 polyester /
 3 cashmere melange, 7gg

XS	S	M	L	XL	XXL
----	---	---	---	----	-----

- relaxed mock neck sweater with cross over pointelle detail on body
- sleeves have slight ruching at shoulders and cuffs
- rib knit trim on mock collar, cuffs and sweep
- fully fashioned

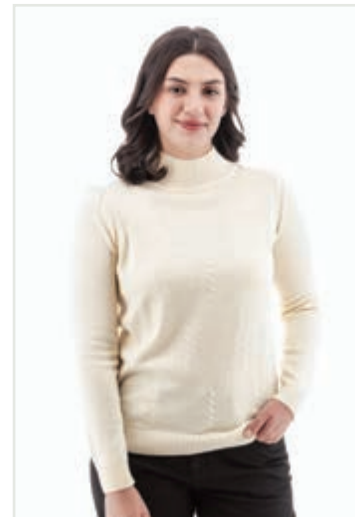
Premier MSRP \$109.00 ||
Standard MSRP \$99.00 ||
Cost \$49.50



308 Olive Night



909 Acorn



1064 Egret

N544699 Halcyon Sweater



100% extra-fine merino wool, 7gg

XS	S	M	L	XL	XXL
----	---	---	---	----	-----

- mixed stitch sweater
- color tipped, scalloped detail at neck trim, cuffs and sweep
- fully fashioned

Premier MSRP \$139.00 ||
Standard MSRP \$129.00 ||
Cost \$64.50



317 Burnt Henna



520 Charcoal Grey



922 Dark Navy

M20988CQ • M20988CS Equinox Fleece



100% recycled polyester fleece, 1 side pile, 1 side brushed, with all-over print

XS	S	M	L	XL	XXL
----	---	---	---	----	-----

- printed super soft, medium pile fleece pullover
- stand collar
- woven trim details at snap closure center front placket and zip hip pockets
- Lycra® binding at sweep

Premier MSRP \$109.00 ||
Standard MSRP \$99.00 ||
Cost \$49.50



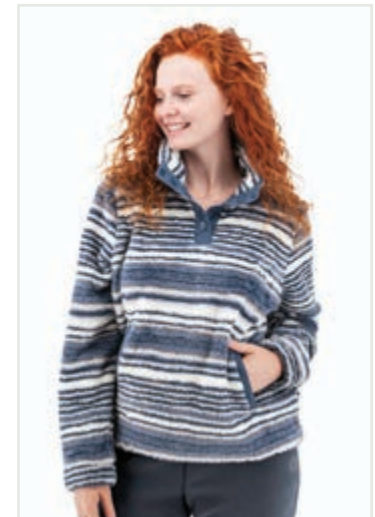
M20988CQ • 600 Gray Ice



M20988CQ • 1064 Egret



M20988CS • 317 Burnt Henna Stripe



M20988CS • 587 Ombre Blue Stripe

0304531 Flurry Vest



100% recycled polyester taffeta,
matte finish with DWR

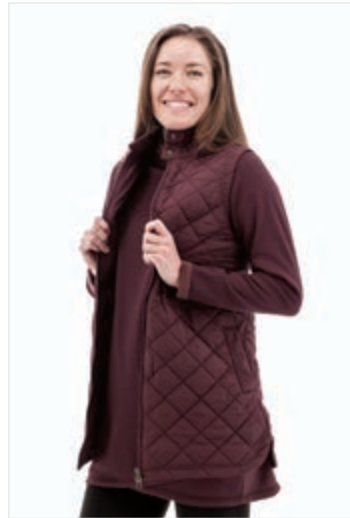
Made in a Fair Trade Certified™ factory

XS	S	M	L	XL	XXL
----	---	---	---	----	-----

- **updated Fallon Vest**
- 32" length
- insulated vest with diamond quilting pattern
- full zip front with snap closure on collar
- internal waist adjustment
- hip pockets



27 Black



136 Sassafras



308 Olive Night



423 High Rise

Premier MSRP \$149.00 ||
Standard MSRP \$139.00 ||
Cost \$69.50

031931CX North Wind Coat

90 polyester / 10 wool +
back: 65 polyester / 35 rayon

XS	S	M	L	XL	XXL
----	---	---	---	----	-----

- 39.5" length
- car coat length fleece jacket
- wool-look outer with jersey inner
- chest pockets with flap and button closure
- hip pockets with welt
- back yoke
- shirttail hemline

Premier MSRP \$215.00 ||
Standard MSRP \$199.00 ||
Cost \$99.50



1342 Black Bean



North Wind Coat, pg. 38

Twilight Sweater, pg. 36

Roma 5-Pocket Pant, pg. 50



Flurry Vest, pg. 38

Crispin Top, pg. 33

Roma 5-Pocket Pant, pg. 50

delivery two • 8/15/25

0291443 Aurora Jacket



98 cotton / 2 spandex diagonal cut corduroy

Made in a Fair Trade Certified™ factory

XS	S	M	L	XL	XXL
----	---	---	---	----	-----

- **updated Rhyder Jacket**
- stand collar with decorative tape on center back collar
- full zip front
- drop in chest pockets
- hip pockets
- hidden snaps on cuffs
- back waist is gathered and stretches



146 Parchment



587 Ombre Blue



1342 Black Bean



1121 Dusky Green

Premier MSRP \$129.00 ||
Standard MSRP \$119.00 || Cost \$59.50

L246443 Aurora Pant



98 cotton / 2 spandex diagonal cut corduroy

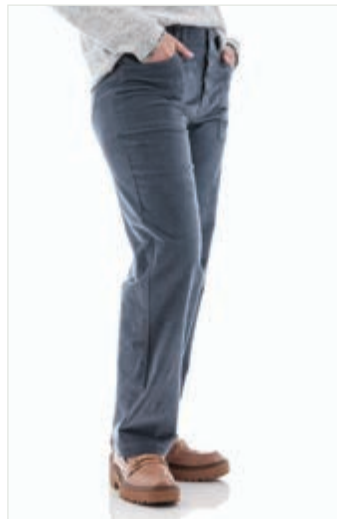
Made in a Fair Trade Certified™ factory

0	2	4	6	8	10	12	14	16
---	---	---	---	---	----	----	----	----

- 30" inseam
- relaxed fit pant
- exposed shank fly closure
- curved front pockets that extend to belt loops
- back drop-in pockets
- knee darts for shaping



146 Parchment



587 Ombre Blue



1342 Black Bean



1121 Dusky Green

Premier MSRP \$99.00 ||
Standard MSRP \$95.00 || Cost \$47.50

P398443 Aurora Skirt




98 cotton / 2 spandex diagonal cut
corduroy

Made in a Fair Trade Certified™ factory

0	2	4	6	8	10	12	14	16
---	---	---	---	---	----	----	----	----

- updated Rhyder Skirt
- 25.5" length
- full shank front closure
- curved front pockets that extend to be belt loops
- back drop-in pockets
- back kick pleat

 **Premier MSRP \$85.00** ||
Standard MSRP \$79.00 || **Cost \$39.50**



146 Parchment



587 Ombre Blue



1342 Black Bean



1121 Dusky Green



Nordic Sweater, pg. 36

Aurora Skirt, pg. 41

Nicole Henley, pg. 32

Stellar Pant, pg. 22

Cozy Fleece Vest, pg. 51

Cordelia Top, pg. 34

Roma 5-Pocket Pant, pg. 50

Equinox Fleece, pg. 37

Tiffi Cowl Neck, pg. 32

Dog-Walker Jogger, pg. 29



Twilight Sweater, pg. 36

Roma 5-Pocket Pant, pg. 50



Nordic Sweater, pg. 36

Aurora Skirt, pg. 41



Halcyon Sweater, pg. 37

Lucia Pant, pg. 22



Noella Sweater, pg. 49

Stellar Pant, pg. 22



Solitude Sweater, pg. 49

Aurora Pant, pg. 40



Iclyn Top, pg. 46

Frost Flannel Shirt, pg. 48



forge

delivery three

available 9/15/2025

Embrace the spirit of the trailblazer with our third delivery, Forge.

Symbolizing the courage to push through boundaries, Forge represents our unwavering commitment to sustainability and Fair Trade practices as a family-owned brand. Since our journey began, we've been pushing forward in the world of ethical fashion, breaking boundaries and setting new standards.

Forge your own path with us, stepping boldly into the future as we continue to shape a more sustainable world together.

Cozy Fleece Vest, pg. 51

Cordelia Top, pg. 34

Roma 5-Pocket Pant, pg. 50



M22898 Grace Top



100% organic cotton, fancy knit + rib knit

Made in a Fair Trade Certified™ factory

XS	S	M	L	XL	XXL
----	---	---	---	----	-----

- button front center placket
- 1x1 rib knit stand collar and cuffs

Premier MSRP \$85.00 ||
Standard MSRP \$79.00 ||
Cost \$39.50



317 Burnt Henna



601 Bleached Denim



1064 Egret



1342 Black Bean

M23498 Iclyn Top



100% organic cotton, fancy knit + jersey

Made in a Fair Trade Certified™ factory

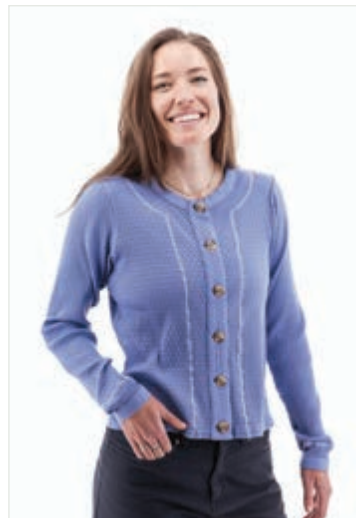
XS	S	M	L	XL	XXL
----	---	---	---	----	-----

- full button-front knit cardigan-style shirt
- embroidery along center front placket and neckline
- banded cuffs with embroidery detail
- jersey details at inside collar facing, inside back yoke facing and cuffs

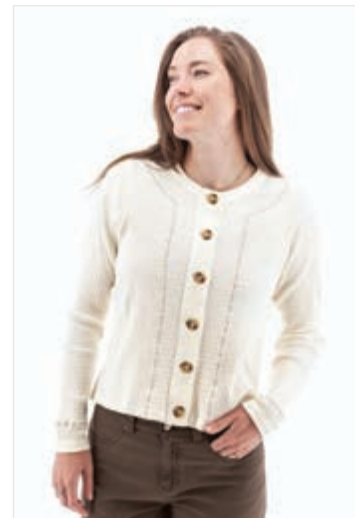
Premier MSRP \$79.00 ||
Standard MSRP \$75.00 ||
Cost \$37.50



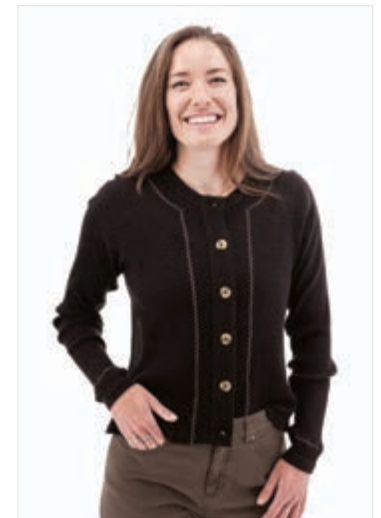
317 Burnt Henna



601 Bleached Denim



1064 Egret



1342 Black Bean

M88086 Eden Turtleneck



67 viscose from bamboo / 28 organic cotton /
5 Lycra® spandex brushed

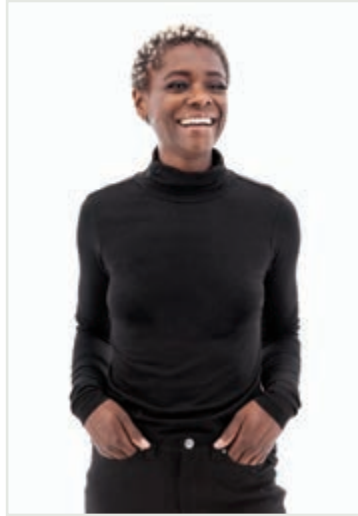
XS	S	M	L	XL	XXL
----	---	---	---	----	-----

- ruched neck
- back yoke detail

Premier MSRP \$52.00 ||
Standard MSRP \$49.00 || Cost \$24.50



03 White



27 Black



587 Ombre Blue



921 Atlantic Deep



1340 Persian Red

M19799 Sterling Top



57 organic cotton / 38 Tencel™
modal / 5 elastane, slub single jersey

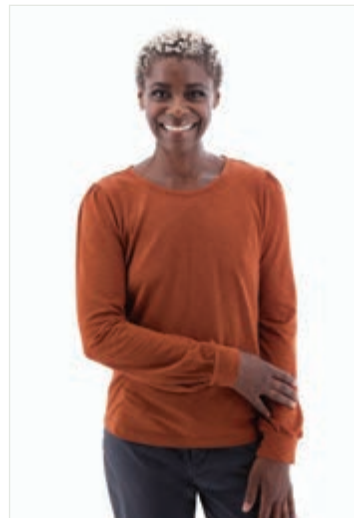
XS	S	M	L	XL	XXL
----	---	---	---	----	-----

- scoop neck long sleeve top
- bishop sleeves
- slight ruching at shoulder and cuffs

Premier MSRP \$59.00 ||
Standard MSRP \$55.00 ||
Cost \$27.50



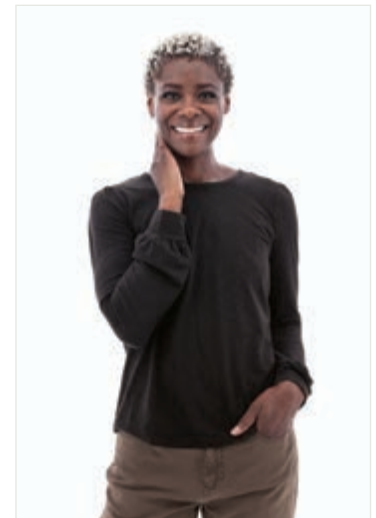
192 Medieval Blue



317 Burnt Henna



921 Atlantic Deep



1342 Black Bean

J27415AU Frost Flannel Shirt



100% organic cotton, twill weave, brushed

Made in a Fair Trade Certified™ factory

XS	S	M	L	XL	XXL
----	---	---	---	----	-----

- updated Braelin Shirt
- button-front center placket
- cuffs with single button closure
- single chest pocket
- decorative pick stitching on collar and pocket hem
- shirttail hemline



27 Black



317 Burnt Henna

Premier MSRP \$95.00 ||
Standard MSRP \$89.00 || Cost \$44.50

J289100 Soiree Top



100% Tencel™ modal twill, garment dye

Made in a Fair Trade Certified™ factory

XS	S	M	L	XL	XXL
----	---	---	---	----	-----

- drop shoulder long sleeve top
- relaxed fit
- gathered cuffs with elastic
- top applied ladder lace along drop shoulder seam
- decorative tape at center back
- decorative pintucks along center front placket



192 Medieval Blue



317 Burnt Henna



921 Atlantic Deep

Premier MSRP \$105.00 ||
Standard MSRP \$99.00 ||
Cost \$49.50

N524846 Noella Sweater



50 recycled polyester / 15 polyester /
13 nylon / 13 acrylic / 6 wool /
3 spandex, 5gg

XS	S	M	L	XL	XXL
----	---	---	---	----	-----

- crew neck fair isle sweater
- raglan sleeves
- fully fashioned

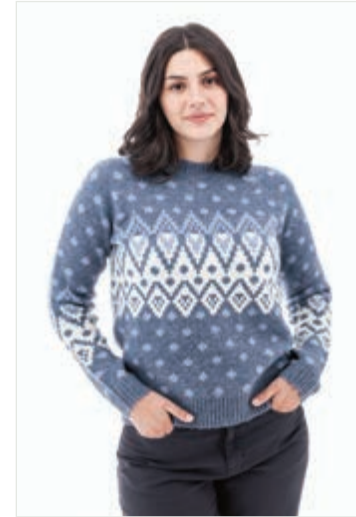
Premier MSRP \$125.00 ||
Standard MSRP \$119.00 ||
Cost \$59.50



27 Black



107 Chestnut



587 Ombre Blue

N531846 Solitude Sweater



50 recycled polyester / 15 polyester /
13 nylon / 13 acrylic / 6 wool /
3 spandex, 7gg

XS	S	M	L	XL	XXL
----	---	---	---	----	-----

- large side-button slouch collar
can be worn closed or open
- slight drop shoulder
- whipstitch detail at rib cuffs,
sweep and shoulder button
placket
- fully fashioned

Premier MSRP \$129.00 ||
Standard MSRP \$119.00 ||
Cost \$59.50



107 Chestnut



601 Bleached Denim



520 Charcoal Grey



921 Atlantic Deep

N536866 Homecoming Sweater



97 recycled polyester / 3 spandex,
5gg

XS	S	M	L	XL	XXL
----	---	---	---	----	-----

- crew neck sweater with raglan sleeves
- 2x2 rib details at raglan armholes and down side seams
- two-tone rib knit details at neck, sweep and cuffs
- side slit and slightly longer back body length
- fully fashioned

Premier MSRP \$125.00 ||
Standard MSRP \$115.00 ||
Cost \$57.50



336 Natural



520 Charcoal Grey



989 Cabernet

L236179 Roma 5-Pocket Pant

68 rayon / 27 nylon / 5 spandex ponte

0	2	4	6	8	10	12	14	16
---	---	---	---	---	----	----	----	----

- 30" inseam
- classic 5-pocket jean-style pant in ponte fabric
- two front pockets
- coin pocket in wearer's front right pocket
- back patch pockets
- back yoke

Premier MSRP \$95.00 ||
Standard MSRP \$89.00 ||
Cost \$44.50



27 Black



264 Charcoal

N515279 Cabin Sweater



76 acrylic / 24 nylon, 5gg

Made in a Fair Trade Certified™ factory

XS	S	M	L	XL	XXL
----	---	---	---	----	-----

- 32" length
- shawl collar longer cardigan
- buttons on center front closure
- removable belt
- rib knit trim on collar, cuffs and sweep
- fully fashioned

Premier MSRP \$159.00 ||
Standard MSRP \$149.00 ||
Cost \$74.50



1064 Egret

P877699 Holly-days Dress

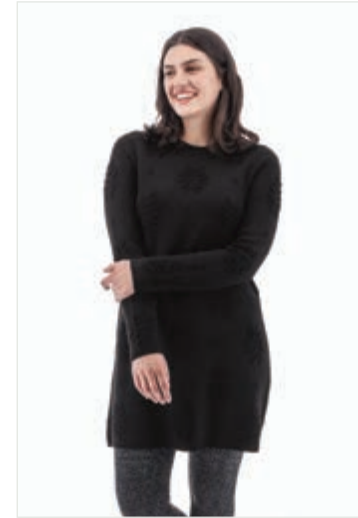


100% merino wool, 12gg

XS	S	M	L	XL	XXL
----	---	---	---	----	-----

- 35" length
- crew neck sweater dress with all-over jacquard pattern
- rib knit trim at neck, cuffs and sweep
- fully fashioned

Premier MSRP \$169.00 ||
Standard MSRP \$159.00 ||
Cost \$79.50



27 Black

031388 Cozy Fleece Vest



100% recycled polyester fleece,
 1 side pile, 1 side brushed

XS	S	M	L	XL	XXL
----	---	---	---	----	-----

- closureless vest with slouch collar
- hip pockets

Premier MSRP \$85.00 ||
Standard MSRP \$79.00 ||
Cost \$39.50



1064 Egret



1342 Black Bean

0299198 Perfect 1/2 Zip Vest



78 rayon / 18 recycled polyester /
3 spandex + velvet touch fleece back:
94 polyester / 6 spandex

XS	S	M	L	XL	XXL
----	---	---	---	----	-----

- 24" length
- pullover half zip vest
- mock collar with velvety inner rolled to the outside
- drop shoulder

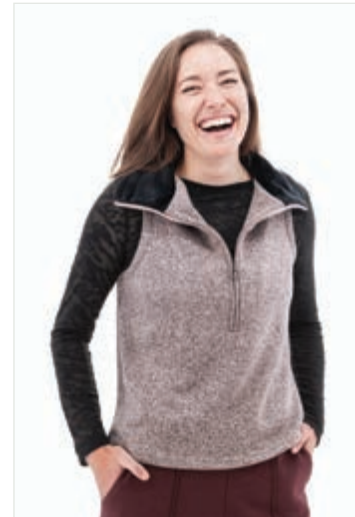
Premier MSRP \$85.00 ||
Standard MSRP \$79.00 ||
Cost \$39.50



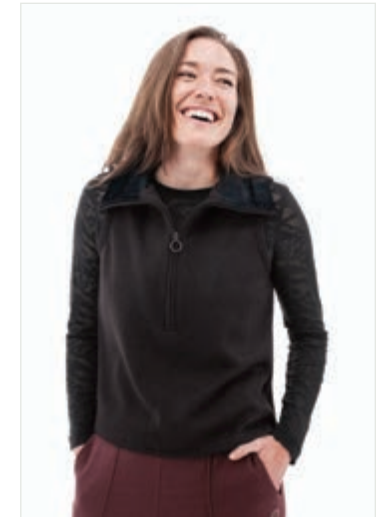
03 White



317 Burnt Henna



440 Adobe Rose



1342 Black Bean

0265198 Perfect Jacket



78 rayon / 18 recycled polyester /
3 spandex + velvet touch fleece back:
94 polyester / 6 spandex

XS	S	M	L	XL	XXL
----	---	---	---	----	-----

- 32" front body length
- 33.5" back body length
- full zip jacket
- hip pockets have flap closure at the top as well as hand warmer pockets with side entry
- rib knit details on collar and cuffs
- thumbholes in cuffs

Premier MSRP \$169.00 ||
Standard MSRP \$159.00 ||
Cost \$79.50



03 White



317 Burnt Henna



440 Adobe Rose



1342 Black Bean

Holly-days Dress, pg. 51



Homecoming Sweater, pg. 50

Lucia Pant, pg. 22



Patchwork Print Scarf, pg. 57

Elsa Sweater, pg. 18

Stellar Pant, pg. 22



Timeless Plaid Scarf, pg. 57

Flurry Vest, pg. 38

Crispin Top, pg. 33

Roma 5-Pocket Pant, pg. 50





scarves

available 8/15/2025

Wrap yourself in timeless warmth with our thoughtfully curated scarf collection, designed to be more than just accessories.

Soft textures combine with bold patterns and classic designs, making these scarves the perfect addition to any adventure or outfit. Whether you're out exploring or elevating your everyday look, our scarves provide both comfort and style, ready for whatever the day brings.

Z62600 Tonal Chevron Scarf

51 acrylic / 26 nylon / 15 cotton / 8 wool

ONE SIZE

- 20" x 72" excluding fringe
- tonal chevron pattern

 **MSRP \$45.00** ||
Cost \$22.50



702 Jeans

Z62400 Abstract Geo Scarf

50 viscose / 50 acrylic

ONE SIZE

- 28" x 72"
- abstract geometric pattern

MSRP \$42.00 ||
Cost \$21.00



13 Red

Z62300 Shell Swirl Striped Scarf

50 viscose / 50 acrylic

ONE SIZE

- 28" x 72"
- abstract swirl pattern

MSRP \$42.00 ||
Cost \$21.00



02 Navy

Z62500 Art Deco Fringed Scarf

60 acrylic / 40 cotton

ONE SIZE

- 28" x 72"
- art deco pattern

MSRP \$42.00 ||
Cost \$21.00



579 Grey

Z62200 Classic Houndstooth Scarf

100% viscose

ONE SIZE

- 28" x 72" excluding fringe
- classic houndstooth pattern

MSRP \$35.00 ||
Cost \$17.50



474 Olive




579 Grey

Z62000 Patchwork Print Scarf

50 viscose / 50 modal

ONE SIZE

- 42" x 72"
- patchwork pattern

 **MSRP \$29.00** ||
Cost \$14.50



27 Black



572 Rust




579 Grey

Z61900 Animal Print Scarf

100% viscose

ONE SIZE

- 42" x 72"
- animal print pattern

 **MSRP \$29.00** ||
Cost \$14.50



164 Beige

Z62100 Timeless Plaid Scarf

100% viscose

ONE SIZE

- 28" x 72" excluding fringe
- classic plaid pattern

 **MSRP \$35.00** ||
Cost \$17.50



02 Navy



27 Black

long sleeve tops

M22099AQ	Amaryllis Top.....	pg. 13
M12991	Ambrosia Top.....	pg. 12
M21391	Ambrosia Turtleneck.....	pg. 12
J291282CU	Autumn Top.....	pg. 15
J294151	Cordelia Top.....	pg. 34
M21609	Crispin Top.....	pg. 33
M22599	Crystal Henley.....	pg. 13
M88086	Eden Turtleneck.....	pg. 47
J30218AW	Eve Popover Top.....	pg. 14
J29614AS	Fleur de Lis Top.....	pg. 15
J27415AU	Frost Flannel Shirt.....	pgs. 35, 48
M22898	Grace Top.....	pg. 46
J29956AR	Gramercy Shirt.....	pg. 34
M23498	Iclyn Top.....	pg. 46
M22257	Nevis Top.....	pg. 14
M13357XW	Nicole Henley.....	pg. 32
J289100	Soiree Top.....	pg. 48
M19799	Sterling Top.....	pg. 47
M21057AT	Sylvan Top.....	pg. 33
M14657	Tiffi Cowl Neck.....	pg. 32

dresses

P88399 •	Amaryllis Dress.....	pg. 16
P88399AQ		
P865282 •	Autumn Dress.....	pg. 16
P865282CU		
P877699	Holly-days Dress.....	pg. 51
P871998	Weekend Dress.....	pg. 28

sweaters

N515279	Cabin Sweater.....	pg. 51
N537683	Cascade Cardigan.....	pg. 17
N529719	Elsa Sweater.....	pg. 18
N544699	Halcyon Sweater.....	pg. 37
N536866	Homecoming Sweater.....	pg. 50
N524846	Noella Sweater.....	pg. 49
N526279	Nordic Sweater.....	pg. 36
N522849	Pine Vest.....	pg. 17
N531846	Solitude Sweater.....	pg. 49
N533630	Twiggy Sweater.....	pg. 18
N540849	Twilight Sweater.....	pg. 36

bottoms

L246443	Aurora Pant.....	pg. 40
P398443	Aurora Skirt.....	pg. 41
L238998	Dog-Walker Jogger.....	pg. 29
L213998	Dog-Walker Legging.....	pg. 28
L234425	Lucia Pant.....	pg. 22
L236179	Roma 5-Pocket Pant.....	pg. 50
L237296	Stellar Pant.....	pg. 22
L240998	Weekend Dog-Walker Pant.....	pg. 29

fleece, layers & outerwear

O291443	Aurora Jacket.....	pg. 40
M192880	Comfy 1/4 Zip.....	pg. 19
M221880	Comfy Hoodie.....	pg. 27
O31388	Cozy Fleece Vest.....	pg. 51
M107998 •	Dog-Walker Top.....	pg. 26
M107998CZ		
O275998	Dog-Walker Vest.....	pg. 27
M20988CQ •	Equinox Fleece.....	pg. 37
M20988CS		
O304531	Flurry Vest.....	pg. 38
O311531	Leaf Peeper Jacket.....	pg. 21
M18332 •	Luscious Shirt.....	pg. 19
M18332CY		
O31931CX	North Wind Coat.....	pg. 38
O299198	Perfect 1/2 Zip Vest.....	pg. 52
O265198	Perfect Jacket.....	pg. 52
O306845	Solstice Bomber Jacket.....	pg. 20
O315845	Solstice Fleece Vest.....	pg. 20
O30831CW	Woods Moto Jacket.....	pg. 21

scarves

Z62400	Abstract Geo Scarf.....	pg. 56
Z61900	Animal Print Scarf.....	pg. 57
Z62500	Art Deco Fringed Scarf.....	pg. 56
Z62200	Classic Houndstooth Scarf.....	pg. 56
Z62000	Patchwork Print Scarf.....	pg. 57
Z62300	Shell Swirl Striped Scarf.....	pg. 56
Z62100	Timeless Plaid Scarf.....	pg. 57
Z62600	Tonal Chevron Scarf.....	pg. 55

All sales by Sportif Wholesale or Aventura Clothing, referred to hereinafter as "Sportif", are exclusively governed by and subject to the Terms and Conditions contained herein. Requests which add to, vary from or conflict with these Terms & Conditions are expressly rejected and can only be made effective in a written document signed and dated by an officer of Sportif.

Orders are subject to credit approval by Sportif's Banking Factor. Standard Terms are N30 and effective from the date of invoice. Advance payment may be required in some cases. Preseason discounts are issued at the time of invoice. Discounts are extended to merchandise only and not to shipping and handling. We reserve the right to ship orders up to 30 days in advance of the requested ship date. Prices are subject to change without notice. We reserve the right to accept or reject any order.

ORDER CANCELLATIONS/REVISIONS

Order cancellations or revisions equal to or more than 20% must be made through regional sales representative and may result in the loss of preseason terms and discount. All cancellations and revisions must be requested in writing.

CANCELLATIONS WILL NOT BE ACCEPTED AFTER 60 DAYS FROM ORDER SUBMISSION DATE.

CLAIMS

Claims against shipments must be made in writing (via mail, fax or email) within 15 days from receipt of goods. Warranty returns will be repaired or replaced at Sportif's option.

RETURNS

All returns, including defective merchandise, must be preauthorized by your account manager within 90 days. Unapproved returns will be refused at the Dealer's expense. Approved returns that are not defective or damaged must be received by Sportif in a condition conducive for resale. Returns may be subject to a 10% restocking fee.

SHIPMENTS

Standard shipping will be F.O.B. Sportif Wholesale, Inc., UPS Ground Service, prepaid and invoiced. All other shipping methods or special shipping instructions need to be clearly stated on your purchase order.

PAST DUE ACCOUNTS/COLLECTION

Past due accounts shall incur a service charge of 1.5% per month, or \$5.00, whichever is greater, for each outstanding invoice. Shipments will be withheld from accounts with past due invoices and/or other charges. Accounts that are more than 60 days past due may be turned over to a collection agency. Buyer agrees to pay the full cost and expense, including attorney's fees incurred by Sportif Wholesale, Inc. for the collection of past due accounts.

EMPLOYEE PURCHASES/VIP PROGRAM

We offer discounts to full-time store employees. Please contact your sales rep or our customer service for details and authorization of our on-line Sales Associate Pro-Deal.

www.aventurab2b.com • 800-776-7843

20
25

TERMS &
CONDITIONS



Crystal Henley, pg. 13

Stellar Pant, pg. 22

FIND YOUR REGIONAL SALES REP

NEW ENGLAND / MID-ATLANTIC

Maine, New Hampshire, Connecticut,
Rhode Island, Vermont, Massachusetts
New Jersey, Pennsylvania, New York,
Maryland, Delaware

Lisa Lombardi Keeley & Michael Keeley

PO BOX 248
Perkinsville, VT 05151
Lisa Cell: (203) 215-0485
Michael Cell: (802) 299-6622
Lisa E-mail: lisakeeley.lk@gmail.com
Michael E-mail: michaeljkeeley73@gmail.com

SOUTHEAST / MID-ATLANTIC

Alabama, Georgia, Florida,
North Carolina, South Carolina,
West Virginia, Tennessee, Virginia

Paul Jones

701 41st Ave. South
North Myrtle Beach, SC 29582
Phone: (843) 457-7819
Email: pauljone@earthlink.net

MIDWEST

Iowa, Illinois, Indiana, Kentucky, Kansas,
Michigan, Minnesota, Missouri, E. Nebraska,
North Dakota, South Dakota, Ohio, Wisconsin

Bailey2Weeks

Julie Bailey Weeks & Mark Weeks

15509 Holdridge Dr.
Wayzata MN 55391
Julie Cell: (612) 759-6391
Mark Cell: (612) 965-5509
Julie E-mail: julie@bailey2weeks.com
Mark E-mail: mark@bailey2weeks.com

HEARTLAND

Arkansas, Louisiana, Mississippi,
Oklahoma, Texas

Sigrid & Alan Quinn

2554 NW Marshall St., Unit A
Portland, OR 97210
Sigrid Cell: (206) 200-7578
Alan Cell: (503) 250-2680
Sigrid E-mail: sigridquinn66@gmail.com
Alan E-mail: alancquinn@aol.com

ROCKY MOUNTAIN

Colorado, W. Nebraska, New Mexico,
Utah, Montana, Wyoming, Idaho

Soni Miller

1571 E. Petunia Way
Sandy, UT 84092
Phone: (801) 572-3470
Cell: (801) 554-3212
E-mail: sonimiller18@gmail.com

WEST COAST / SOUTHWEST

Arizona, California, Nevada, Hawaii

Paige Ricciardi

3650 Lazarro Dr.
Carmel, CA 93923
Phone: (831) 238-2746
E-mail: paigekitson@yahoo.com

PACIFIC NORTHWEST

Washington, Oregon, Alaska

Sigrid & Alan Quinn

2554 NW Marshall St., Unit A
Portland, OR 97210
Sigrid Cell: (206) 200-7578
Alan Cell: (503) 250-2680
Sigrid E-mail: sigridquinn66@gmail.com
Alan E-mail: alancquinn@aol.com

CANADA REPS

EASTERN CANADA

Sally Adams

160 Tycos Dr., Suite 114
Toronto, Ontario, M6B 1W8
Phone: (416) 998-4729
Fax: (866) 568-5950
E-mail: sallyadamsagency@gmail.com

WESTERN CANADA

Rina Howard

#106-281 Cougar Ridge Dr. SW
Calgary, Alberta T3H 0J2
Cell: (403) 999-4975
E-mail: r_howard@telus.net



CLOTHING WITH CONSCIOUS ORIGINS

FALL / WINTER 2025

CORPORATE OFFICE

Sportif USA

1415 Greg St., Suite 101 • Sparks, NV 89431
Phone: 1-800-776-7843 • Fax: (775) 356-3567
E-mail: whsl@sportif.com

CANADA DISTRIBUTION

Sportables Fine Goods Limited
75 Shields Ct., Unit 2 • Markham, Ontario • Canada, L3R 9T4
Phone: 1-800-563-2746 Fax: (905) 305-1639
E-mail: info@sportables.ca

Visit us at www.aventurab2b.com

- Easy online ordering
- Get regular updates on inventory
- Check on the status of an order
- Shop closeouts
- Browse products by season
- Download our workbook



This workbook is printed with soy-based inks on 10% post-consumer waste paper certified by the Forest Stewardship Council to come from well-managed forests.