



CLOTHING WITH CONSCIOUS ORIGINS



SPRING / SUMMER 2026



We believe in clothing with a conscience.

FOR PEOPLE. FOR THE PLANET. FOR THE FUTURE.

We design  *real women who*

— LEAD, EXPLORE & SHOW UP —

unapologetically as themselves.

we believe in slow fashion

with **SUSTAINABILITY**

AT ITS CORE. BECAUSE DOING THE *RIGHT* THING
ISN'T JUST A *TREND* – IT'S HOW WE DO BUSINESS.

As a family-owned, woman-led brand,

we believe in making a difference – one garment at a time.

SPRING

20
26

SUMMER

4 **our conscious origins**

learn about this season's sustainable fibers and the power of Fair Trade

7 **sizing & fit**

meet the faces of the Spring 2026 collection & review our size chart



8

delivery one

the getaway

available 1/15/2026



28

core delivery

the essentials

available 1/15/2026

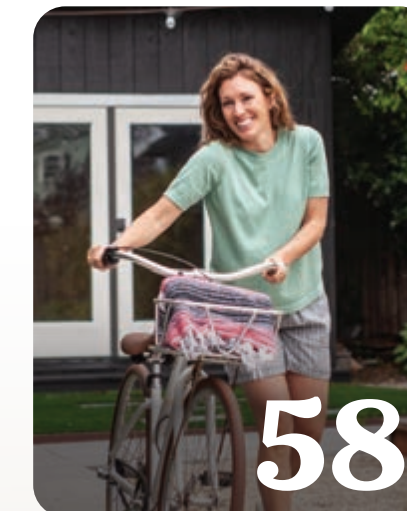


36

delivery two

afterglow

available 2/15/2026



58

product index

*easily find your favorite pieces +
check out our terms & conditions*

On the cover, from left to right: Breezey Dress, pg. 20

Beachcomber Long Sleeve, pg. 19 and Leni Solid Bermuda Short, pg. 50

Sorrento Dress, pg. 22



Airy Top, pg. 45

Kelford Full Button Long Sleeve, pg. 48

Simone Tank Top, pg. 42

Arden V2 Short, pg. 32

every thread tells a story

Some threads are visible. Others are felt. Woven through shared stories, quiet strength, and lifelong connection, the thread of sisterhood is soft but unbreakable.

We design with those invisible threads in mind—using organic cotton, recycled fibers, and low-impact materials to create clothing that’s better for the planet and supportive in every season of life. Sustainably made. Thoughtfully designed. Meant to move through life with you.

Because every thread tells a story—of care, of connection, and a future we’re proud to create.



better fibers, better future

At Aventura, we believe sustainability starts at the source—choosing materials that are better for us and better for the planet, while delivering the comfort, durability, and beauty you deserve.

These are the conscious choices woven into every piece we make.



Organic Cotton

Soft by nature, strong by design.

Organic cotton is grown without synthetic pesticides or fertilizers and uses farming methods that promote soil health and conserve water. It’s gentle on your skin and better for the planet—making it a true superhero fiber in sustainable fashion.



Recycled Cotton

Old fabric, new purpose.

Recycled cotton gives pre- and post-consumer waste—like cutting scraps and old clothing—a second life. It offers the same softness and breathability as conventional cotton, but with less environmental impact and less waste in the world.



Recycled Polyester

Performance with a lighter footprint.

Made from post-consumer materials like plastic bottles, recycled polyester transforms waste into durable, quick-drying fabric. It reduces energy, water usage, and landfill waste—all without compromising on everyday performance.



TENCEL™ Modal

Luxury made responsibly.

Sourced from sustainably managed beechwood forests, TENCEL™ Modal is known for its unmatched softness and graceful drape. Its closed-loop production recaptures 95% of solvents, making it as kind to the environment as it is to your skin.



TENCEL™ Lyocell

Elegance meets eco-innovation.

TENCEL™ Lyocell starts with wood pulp from responsibly managed forests and transforms it into a biodegradable, breathable fabric through a closed-loop process that recycles 99% of water and solvents. It’s strong, silky-soft, and built to last.



LENZING™ ECOVERO™ Viscose

Lighter on the planet. Just as lovely.

LENZING™ ECOVERO™ is derived from renewable wood sources and created with up to 50% less water and emissions than conventional viscose. Soft, durable, and naturally flowy, it’s a smart choice for both comfort and sustainability.



Hemp

Naturally rugged. Surprisingly soft.

Hemp grows fast, thrives with little water, and improves the soil where it’s planted. Breathable and antimicrobial, it softens with every wash and holds up to a hardworking lifestyle—making it one of the most eco-friendly fibers around.



Midsummer Dress, pg. 49



more than a label

Fair Trade is more than a label. It’s a promise—of fair wages, safe workplaces, and a voice for the women who make our clothes.

In many factories, women face barriers to opportunity, safety, and independence. Fair Trade helps change that.

By supporting factories where 80% of workers are women, Fair Trade USA™ empowers them to lead, invest in their communities, and build brighter futures.

Every Fair Trade garment is a step forward—toward dignity, equity, and lasting change.



Keep an eye out for the Fair Trade Certified™ seal throughout this season’s book to easily identify ethically produced styles.

SPRING 2026 SUMMER

Meet the faces of the Spring / Summer 2026 Collection

We’re sharing their heights and the sizes they’re wearing to help you get a better feel for how each piece fits in real life.

Have questions? Your sales rep or our customer service team is always here to help you find the perfect fit.



Demerey
5’5 | WEARS SIZE: 6/S



Laura
5’7 | WEARS SIZE: 6/S



Kirsty
5’10 | WEARS SIZE: 4/S



Karissa
5’4 | WEARS SIZE: 6/S



Megan
5’4 | WEARS SIZE: 2/XS



Grace
5’8 | WEARS SIZE: 4/S



Myra
5’9 | WEARS SIZE: 2/XS

	XS		S		M		L		XL	XXL
Size	0	2	4	6	8	10	12	14	16	18
Bust	33½	34½	35½	36½	37½	39	40½	42	43½	46
Waist	25½	26½	27½	28½	29½	31	32½	34	35½	38
Hip	36½	37½	38½	39½	40½	42	43½	45	46½	49
Front standard rise (including waistband):					9 - 9½					
Front mid-rise (including waistband):					10 - 10½					



Breezey Dress, pg. 20

Beachcomber Long Sleeve, pg. 19

Leni Solid Bermuda Short, pg. 50

Sorrento Dress, pg. 22



Bindi Beach Top, pg. 15

Halifax Short, pg. 34



Endless Summer Dress, pg. 24

Beachcomber Short Sleeve, pg. 18

Sorrento Pant, pg. 23



Endless Summer Top, pg. 13

Beachcomber Short Sleeve, pg. 18

delivery one

available 1/15/2026

the getaway

It starts with a group text— a spark, a plan, an open road.

The car is packed. Windows down.
We're layered in softness, dressed for ease,
ready for wherever the day takes us.

These are the styles that move with us.
For gas station laughs, scenic stops,
and late-night talks under unfamiliar stars.

Made to feel good. Made to do good.
Because the best kind of getaway
brings us back to ourselves— and closer to each other.



Simone Dress, pg. 43

Meadows Tee, pg. 13

Ballard Ankle Pant, pg. 35



Laken Top, pg. 17

Arden V2 Short, pg. 32



Beachcomber Long Sleeve, pg. 19

Leni Solid Bermuda Short, pg. 50

Bali Tank | M22302DF

A geometric-inspired print with contrast trim on the neck and armholes. Crafted from a breathable blend of organic cotton and linen knit for a lightweight, polished look.

XS	S	M	L	XL	XXL
----	---	---	---	----	-----

Product Details



- 70 organic cotton / 30 linen jersey
- Made in a Fair Trade Certified™ factory

Key Features

- Printed tank with contrast trim on neck and armholes



147 Simply Taupe



Back View

Isla Top | M23199

A slub texture with a relaxed raglan sleeve and gathered neckline, crafted from a blend of organic cotton, TENCEL™ modal, and elastane for soft, flexible style.

XS	S	M	L	XL	XXL
----	---	---	---	----	-----

Product Details



- 57 organic cotton / 38 TENCEL™ modal / 5 elastane, slub single jersey

Key Features

- Raglan sleeve
- Gathered neckline



03 White



147 Simply Taupe



138 Cendre Blue



27 Black



607 Granite Green



902 Pale Peach

Endless Summer Top | M230102

A summery scoop neck with a drop shoulder, and shirttail hemline. Made from soft, yarn-dyed striped organic cotton jersey for effortless, everyday comfort.

XS	S	M	L	XL	XXL
----	---	---	---	----	-----

Product Details



- 100% organic cotton jersey, yarn-dye stripe
- Made in a Fair Trade Certified™ factory
- New & improved Summerville Top

Key Features

- Scoop neck
- Drop shoulder
- Back yoke
- Shirttail hemline



122 Gibraltar Sea



27 Black



607 Granite Green



Back View

Meadows Tee | M24291DI

A laid-back scoop neck with dolman sleeves and a relaxed silhouette. Made from a lightweight blend of organic cotton and recycled polyester with a striped burnout texture and floral overprint that gives it a soft, sun-faded charm.

XS	S	M	L	XL	XXL
----	---	---	---	----	-----

Product Details



- 55 organic cotton / 45 recycled polyester jersey, striped burnout pattern + all-over print
- New & improved Charlie Top

Key Features

- Dolman sleeve
- Burnout with all-over floral print



122 Gibraltar Sea



902 Pale Peach



Back View

Juni 3/4 Sleeve Tee | M21595

A stylish notch neck and soft organic cotton blend with a flattering fit and garment-dyed finish for everyday wear.

XS	S	M	L	XL	XXL
----	---	---	---	----	-----

Product Details



- 95 organic cotton / 5 spandex single jersey
- Made in a Fair Trade Certified™ factory

Key Features

- 3/4 sleeve
- Notch neck
- Shirttail hemline
- Garment dyed



03 White



27 Black



122 Gibraltar Sea



607 Granite Green

Summer Breeze Long Sleeve | N521664

A U-neckline and airy open-knit design, made from 100% organic cotton for a lightweight and timeless beachy look.

XS	S	M	L	XL	XXL
----	---	---	---	----	-----

Product Details



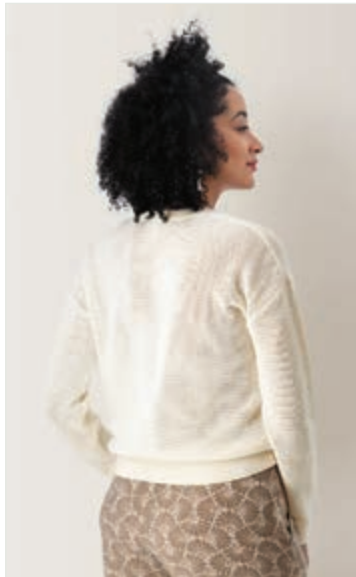
- 100% organic cotton knit, 12gg
- Made in a Fair Trade Certified™ factory

Key Features

- U-neckline
- Open knit
- Drop shoulder
- Ribknit details on neck trim, cuffs and sweep



1064 Egret



Back View

Bindi Beach Top | N538664

A stylish johnny collar and an open-knit striped design, crafted from 100% organic cotton for a lightweight and breathable feel.

XS	S	M	L	XL	XXL
----	---	---	---	----	-----

Product Details



- 100% organic cotton knit, 12gg
- Made in a Fair Trade Certified™ factory

Key Features

- Johnny collar neckline
- Open knit
- Ribknit details on collar, cuffs and sweep



27 Black



336 Natural



Back View

Delta Jacket | 0307219

A relaxed take on a tailored classic. A soft cotton-blend terry blazer with casual ease, two-button front, and just enough structure to pull any look together.

XS	S	M	L	XL	XXL
----	---	---	---	----	-----

Product Details



- 80 organic cotton / 20 polyester terry

Key Features

- 25" length
- Blazer-style knit jacket
- Two button front closure
- Patch front pockets



03 White



122 Gibraltar Sea



Back View

Festival Tank | J32015IU

A split neckline and a relaxed swing-style silhouette, with embroidery at the armholes and center front placket. Made from lightweight organic cotton slub for soft, breathable comfort and a naturally textured feel.

XS	S	M	L	XL	XXL
----	---	---	---	----	-----

Product Details



- 100% organic cotton, one-way slub cross-weave
- Made in a Fair Trade Certified™ factory

Key Features

- Split neck
- Embroidered



03 White



27 Black



Back View

Cassia Top | J31877DK

A timeless elbow sleeve top with a relaxed fit and Moroccan-inspired print. Crafted from 100% organic cotton lightweight slub.

XS	S	M	L	XL	XXL
----	---	---	---	----	-----

Product Details



- 100% organic cotton slub weave
- Made in a Fair Trade Certified™ factory

Key Features

- Relaxed fit
- Y-neck
- Full button front
- Raglan elbow sleeve with elasticized cuffs
- Shirttail hemline



122 Gibraltar Sea



842 Moonstruck



902 Pale Peach



Back View

Laken Top | J29877

A popover collared design with a relaxed shape and roll-up sleeves with tabs for everyday ease. Made from lightweight organic cotton slub weave for soft texture and an airy, effortless feel.

XS	S	M	L	XL	XXL
----	---	---	---	----	-----

Product Details



- 100% organic cotton slub weave
- Made in a Fair Trade Certified™ factory
- New & improved Devon Top

Key Features

- Popover
- Roll-up sleeves with tab
- Single chest pocket



03 White



27 Black



122 Gibraltar Sea



607 Granite Green



1023 Crystal Blue



Back View

Beachcomber Short Sleeve | Solid J30787 | Print/Stripe J30787P

A versatile dolman sleeve button-front design, available in solid, stripe and all-over print options, crafted from lightweight 100% organic cotton crepe.

XS	S	M	L	XL	XXL
----	---	---	---	----	-----

Product Details



- 100% organic cotton crepe, solid, all-over print & yarn-dye stripe
- Made in a Fair Trade Certified™ factory

Key Features

- Dolman sleeve
- Full button front
- Shirttail hemline



J30787 • 03 White



J30787 • 27 Black



J30787 • 122 Gibraltar Sea



Back View



J30787P • DJ07 Green



J30787P • DJ51 Blue



J30787P • DM08 Stone



J30787P • DM72 Peach

Beachcomber Long Sleeve | Solid J31287 | Print/Stripe J31287P

A relaxed popover design with a flattering Y-neckline, crafted from lightweight 100% organic cotton crepe in solid, stripe and all-over print options.

XS	S	M	L	XL	XXL
----	---	---	---	----	-----

Product Details



- 100% organic cotton crepe, solid, all-over print & yarn-dye stripe
- Made in a Fair Trade Certified™ factory

Key Features

- Y-neck
- Popover
- Two chest pockets
- Shirttail hemline



J31287 • 03 White



J31287 • 27 Black



J31287 • 122 Gibraltar Sea



Back View



J31287P • DJ07 Green



J31287P • DJ51 Blue



J31287P • DM08 Stone



J31287P • DM72 Peach



The Breeze Collection

The Breeze Collection embodies the perfect summer day—the one with sun on your shoulders, sand in your shoes, and time on your side. With soft hemp blends, breathable textures, and relaxed silhouettes, each piece is made to feel light, look effortless, and move like a sea breeze. Beachy stripes, easy pull-on bottoms, and subtle details bring the vibe of laid-back days and sun-faded memories—no rush, no fuss, just breezy, beautiful style.

Breezy Dress | P900841

A laid-back tank dress with a flattering fit-and-flare shape, breezy v-neck, and easy button front. Made from a soft, breathable blend for all-day comfort.

XS	S	M	L	XL	XXL
----	---	---	---	----	-----

Product Details



- 54 hemp / 44 TENCEL™ lyocell / 2 spandex
- Made in a Fair Trade Certified™ factory

Key Features

- 38" length
- Tank-style dress with v-neck
- Full button front
- Waist insert for flattering fit
- Hip pockets



DL03 White



DL27 Black



Back View

Breezy Short Sleeve Top | J282841

A johnny collar popover with fixed rolled cuffs and easy-going beachy stripes. Made from a soft, breathable blend of hemp, TENCEL™ lyocell, and spandex for a light, laid-back feel.

XS	S	M	L	XL	XXL
----	---	---	---	----	-----

Product Details



- 54 hemp / 44 TENCEL™ lyocell / 2 spandex
- Made in a Fair Trade Certified™ factory

Key Features

- Johnny collar popover
- Fixed rolled cuffs
- Single chest pocket
- Back yoke



DL03 White



DL27 Black



Back View

Breezy Short | K136841

Breezy Pant | L255841

Product Details



- 54 hemp / 44 TENCEL™ lyocell / 2 spandex
- Made in a Fair Trade Certified™ factory

Short Key Features

- 5.5" inseam with fixed rolled cuff
- Pull-on, mid-rise relaxed fit with smocked waist
- Hip pockets and back drop-in pockets

Pant Key Features

- 31" inseam
- Pull-on, mid-rise pant with drawstring at waist
- Quarter top pockets and back patch pockets



DL03 White



DL27 Black



DL03 White



DL27 Black



The Sorrento Collection

The Sorrento Collection was made for getaway mode. With flowy silhouettes, a timeless print, and a silky-soft drape, these pieces channel the ease of cabana mornings and late-afternoon antipasti. Crafted from lightweight ECOVERO™ viscose and made in Fair Trade Certified™ factories, every style feels like a breath of fresh air—easy to wear, easy to love, and always ready for sunshine. Whether you’re packing for a coastal escape or just dressing like you are, Sorrento brings the vacation vibes.

Sorrento Dress | P902282

A double v-neck tank dress with hip pockets and a flattering midi length. Made from lightweight ECOVERO™ viscose in a tide-washed print that’s ready for sunshine and spontaneity.

XS	S	M	L	XL	XXL
----	---	---	---	----	-----

Product Details



- 100% Lenzing™ ECOVERO™ viscose, high twist crepe
- Made in a Fair Trade Certified™ factory

Key Features

- 48.5" length
- Double v-neck tank
- Hip pockets



DG27 Black



DG29 Sand



Back View

Sorrento Top | J316282

An easy dolman sleeve with a flowy shirttail hem and full button front for a relaxed, beachy vibe. A tide-washed print that looks just right with the matching pant or styled on its own.

XS	S	M	L	XL	XXL
----	---	---	---	----	-----

Product Details



- 100% Lenzing™ ECOVERO™ viscose, high twist crepe
- Made in a Fair Trade Certified™ factory

Key Features

- Dolman sleeve top
- Full button front placket
- Back yoke
- Large shirttail hem



DG27 Black



DG29 Sand



Back View

Sorrento Pant | L235282

Breezy cabana vibes with a relaxed pull-on fit, side slits at the hem, and a tide-washed print. Made from silky, high-twist ECOVERO™ viscose for a flowy drape that moves with you.

XS	S	M	L	XL	XXL
----	---	---	---	----	-----

Product Details



- 100% Lenzing™ ECOVERO™ viscose, high twist crepe
- Made in a Fair Trade Certified™ factory

Key Features

- 28" inseam
- Pull on, relaxed fit, mid-rise pant with drawstring
- 6" side slits at leg openings
- Hip pockets



DG27 Black



DG29 Sand



Back View

Good Vibes Dress | P87856FG

Striped long sleeves, button cuffs, and a tie-neck detail. Made from airy organic cotton gauze in a yarn-dyed stripe for a carefree, boho-inspired look that lives up to its name.

XS	S	M	L	XL	XXL
----	---	---	---	----	-----

Product Details



- 100% organic cotton gauze, yarn-dye stripe
- Made in a Fair Trade Certified™ factory

Key Features

- 38” body length
- Boho-style striped dress
- Long sleeves with button cuffs
- Tie at neck
- Hip pockets



1064 Egret



Back View

Endless Summer Dress | P882102

An easy-going midi-length t-shirt dress with a johnny collar, short sleeves, and side slits for added flow. Made from soft organic cotton jersey in yarn-dyed stripes that channel all-day summer energy.

XS	S	M	L	XL	XXL
----	---	---	---	----	-----

Product Details



- 100% organic cotton jersey, yarn-dye stripe
- Made in a Fair Trade Certified™ factory

Key Features

- 45.5” length with side slits on each side
- Johnny collar
- Single chest pocket
- Back yoke



27 Black



Back View

Abloom Shirtdress | P88603D0

A stand collar, cap sleeves, and a flattering waist seam with subtle darts. Made from lightweight organic cotton poplin in an all-over plant-inspired print that feels fresh and full of life.

XS	S	M	L	XL	XXL
----	---	---	---	----	-----

Product Details



- 100% organic cotton lightweight poplin with all-over print
- Made in a Fair Trade Certified™ factory

Key Features

- 38” length
- All-over plant inspired print
- Stand collar
- Full button front
- Cap sleeves
- Waist seam with darts for flattering shape
- Hip pockets



122 Gibraltar Sea



607 Granite Green



Back View



Beachcomber Short Sleeve, pg. 18

Sorrento Pant, pg. 23



Delta Jacket, pg. 15

Lottie Top, pg. 54

Leni Wide Leg Ankle Pant, pg. 51



Good Vibes Dress, pg. 24



Beachcomber Long Sleeve, pg. 19

Breezy Pant, pg. 21



Bali Tank, pg. 12

Arden Wide Leg Utility Pant, pg. 34



Sorrento Top, pg. 23

Arden Crop Pant, pg. 31



Arden V2 Jacket, pg. 31

Cottage Dress, pg. 44



Splendor Long Sleeve Top, pg. 47

Isla Top, pg. 12

Arden V2 Skort, pg. 33

Midsummer Dress, pg. 49

Mariposa Top, pg. 46

Arden V2 Short, pg. 32

core delivery

available 1/15/2026

the essentials

The staples we live in.
The friendships that hold us up.
Reliable. Comfortable. Always there.

These are the styles we reach for first—
easy layers, everyday favorites,
built for movement, made to last.

Designed to keep pace with real life—
and the women who make it beautiful.

The Arden Collection

Tried. True. Totally Loved.

There’s a reason the Arden Collection has become a summer staple for so many women (and more than one reason, if you ask them). Built from breathable organic cotton with a hint of stretch, these best-selling styles deliver all-day comfort with a just-right fit. Whether you’re headed out for a weekend hike, exploring a new city, or lounging on the back deck, Arden moves with you—effortlessly.

Each piece is garment dyed for that perfectly lived-in look and soft feel, while signature tonal stitching and functional details—like roll-tab cuffs and roomy pockets—bring both personality and practicality. Made in Fair Trade Certified™ factories, the Arden collection is clothing you can feel good about in more ways than one.



Breathable. Sustainable. Built to move.

No wonder they’re an essential piece in any summer wardrobe.

Arden V2 Jacket | 0161442

A jean-style jacket with a feminine twist. Made from soft peached twill with a touch of stretch, it's an easy layer you'll reach for again and again.

XS	S	M	L	XL	XXL
----	---	---	---	----	-----

Product Details



- 98 organic cotton / 2 spandex peached twill
- Made in a Fair Trade Certified™ factory

Key Features

- Decorative shank button closure
- Button-through chest pockets
- Kick pleats at back for feminine fit



03 White



27 Black



138 Cendre Blue



Back View

Arden Crop Pant | L200442

A wide hem, twill tape accents, and easy side slits. Made from soft peached twill with a hint of stretch for all-day comfort.

0	2	4	6	8
10	12	14	16	

Product Details



- 98 organic cotton / 2 spandex peached twill
- Made in a Fair Trade Certified™ factory

Key Features

- 24" inseam, mid-rise
- Wide hem with side slits
- Twill tape details
- Garment dyed except black and white



03 White



27 Black



208 Quarry



853 Insignia Blue

Arden V2 Short | K110442

A laid-back short with roll-tab cuffs, twill tape details, and a garment-dyed finish for that lived-in look. Made from soft peached twill with just enough stretch to keep things comfortable.

0	2	4	6	8
10	12	14	16	

Product Details



- 98 organic cotton / 2 spandex peached twill
- Made in a Fair Trade Certified™ factory

Key Features

- 10" rolled inseam
- 13" unrolled inseam
- Mid-rise
- Roll tab cuff
- Twill tape details
- All colors garment dyed except black and white



03 White



27 Black



138 Cendre Blue



208 Quarry



607 Granite Green



853 Insignia Blue



Back View

Arden V2 Skort | P360442

A sporty-meets-classic skort with twill tape accents and built-in knit shorts for coverage you can count on. Made from soft peached twill with a hint of stretch and an easy, garment-dyed finish.

0	2	4	6	8
10	12	14	16	

Product Details



- skort: 98 organic cotton / 2 spandex peached twill + knit short: 95 cotton / 5 spandex
- Made in a Fair Trade Certified™ factory

Key Features

- 17" skirt length
- 6" knit short inseam
- Twill tape details
- All colors garment dyed except black and white



03 White



27 Black



138 Cendre Blue



208 Quarry



607 Granite Green



853 Insignia Blue



Back View

Halifax Short | K152442

A classic short with front patch pockets, back drop-in pockets, and a flattering mid-thigh length. Made from soft, stretchy peached twill that's easy to wear day after day.

0	2	4	6	8
10	12	14	16	

Product Details



- 98 organic cotton /2 spandex peached twill
- Made in a Fair Trade Certified™ factory

Key Features

- 6" inseam
- Two front patch pockets
- Two back drop-in pockets below back yoke



122 Gibraltar Sea



147 Simply Taupe



998 Olivine



1342 Black Bean

Arden Wide Leg Utility Pant | L260442

A wide leg utility pant with roll-tab cuffs and a single cargo pocket for a laid-back, functional vibe.

0	2	4	6	8
10	12	14	16	

Product Details



- 98 organic cotton /2 spandex peached twill
- Made in a Fair Trade Certified™ factory

Key Features

- 26" inseam
- Mid-rise, wide leg ankle pant
- Single cargo pocket on wearer's right leg
- Roll up leg with tab



122 Gibraltar Sea



147 Simply Taupe



998 Olivine



1342 Black Bean

Ballard Bermuda Short | K158459

A casual Bermuda short with quarter top pockets, back drop-ins, and a garment-dyed finish. Made from organic cotton with a touch of stretch for everyday wear and comfort.

0	2	4	6	8
10	12	14	16	

Product Details



- 97 organic cotton / 3 spandex
- Made in a Fair Trade Certified™ factory

Key Features

- 9.5" inseam, mid-rise
- Garment dyed
- Quarter top pockets
- Drop in back pockets



122 Gibraltar Sea



147 Simply Taupe



733 Myrtle



1342 Black Bean

Ballard Ankle Pant | L228459

Roll-up leg openings, an elastic waist, and easy pockets. Made from organic cotton with a touch of stretch for all-day comfort.

XS	S	M	L	XL	XXL
----	---	---	---	----	-----

Product Details



- 97 organic cotton / 3 spandex
- Made in a Fair Trade Certified™ factory

Key Features

- 26.5" inseam, mid-rise
- Pull-on pant with elastic waist and drawcord for adjustment
- Decorative tape at leg opening when rolled up
- Two hip pockets and two back drop-in pockets
- Garment dyed



122 Gibraltar Sea



147 Simply Taupe



733 Myrtle



1342 Black Bean



delivery two

available 2/15/2026

afterglow

The light shifts. The energy softens.
We've shared the miles, the meals, the moments.
Now comes the part we hold onto.

These styles go where the memories live—
sunset dinners, morning coffee in borrowed sweaters,
one last photo before the road calls again.

Because the best part of any weekend
is what stays long after it ends.



Tulsi Midi Shirtdress, pg. 52



Midsummer Dress, pg. 49

Splendor Long Sleeve Top, pg. 47

Isla Top, pg. 12

Arden V2 Skort, pg. 33

Mariposa Top, pg. 46

Arden V2 Short, pg. 32



Solana Tank, pg. 40

Francesca Skirt, pg. 55

Airy Dress, pg. 45



Leni Jacket, pg. 51

Farley Tee, pg. 41

Arden Wide Leg Utility Pant, pg. 34

Solana Tank | M24457

A rib knit tank with delicate crochet trim at the neck and armholes. Made from a soft blend of organic cotton and TENCEL™ for breathable stretch.

XS	S	M	L	XL	XXL
----	---	---	---	----	-----

Product Details



- 60 organic cotton / 40 TENCEL™ lyocell 2x2 ribknit
- Made in a Fair Trade Certified™ factory

Key Features

- V-neck
- Crochet trim at neck and armholes



03 White



27 Black



122 Gibraltar Sea



607 Granite Green

Solana Tee | M25157

Rib knit tee with delicate crochet trim at the neckline and sleeves. Crafted from a soft, stretchy blend of organic cotton and TENCEL™ for a comfortable, flattering feel.

XS	S	M	L	XL	XXL
----	---	---	---	----	-----

Product Details



- 60 organic cotton / 40 TENCEL™ lyocell 2x2 ribknit
- Made in a Fair Trade Certified™ factory

Key Features

- Scoop neck
- Crochet trim at neck and sleeve openings



03 White



27 Black



122 Gibraltar Sea



607 Granite Green

Farley Tee | M14591DR

A raglan-style tee with subtle ruching at the seams, cap sleeves, and a burnout stripe layered with print. Light, airy, and full of personality.

XS	S	M	L	XL	XXL
----	---	---	---	----	-----

Product Details



- 55 organic cotton / 45 recycled polyester jersey, striped burnout + all-over print
- New & improved Charlie Top

Key Features

- Raglan style top with ruching along raglan seam
- Cap sleeves
- Burnout with over print



03 White



122 Gibraltar Sea



Back View

Summertime Tank | N527664

A lightweight mesh-knit tank with rolled edges, a chest pocket, and ribbed trim at the neck. Made from breathable organic cotton for warm days and sunny vibes.

XS	S	M	L	XL	XXL
----	---	---	---	----	-----

Product Details



- 100% organic cotton knit, 12gg
- Made in a Fair Trade Certified™ factory

Key Features

- Light weight mesh knit with chest pocket
- Rolled edge trim at armholes, sweep edge and pocket opening
- Ribknit neck trim



03 White



Back View

Simone Tank Top | M169135

A soft v-neck tank with ladder lace accents and a flattering shirttail hem. Made from garment-dyed organic cotton and hemp for the ultimate lived-in feel.

XS	S	M	L	XL	XXL
----	---	---	---	----	-----

Product Details



- 70 organic cotton / 30 hemp slub jersey

Key Features

- Soft v-neck tank
- Ladder lace details
- Garment dyed (except white)
- Shirttail hemline



03 White



27 Black



122 Gibraltar Sea



623 Lemon Curry



998 Olivine



Back View

Simone 3/4 Sleeve Top | M229135

A split neck button-front top with 3/4 sleeves, ladder lace details, and subtle cuff ruching. Made from soft organic cotton and hemp with a garment-dyed finish.

XS	S	M	L	XL	XXL
----	---	---	---	----	-----

Product Details



- 70 organic cotton / 30 hemp slub jersey

Key Features

- 3/4 sleeve with split neck
- Full button center front placket
- Ladder lace details on front and back yoke
- Slight ruching at cuffs
- Garment dyed (except white)



03 White



27 Black



122 Gibraltar Sea



998 Olivine

Simone Dress | P881135

An easy-fitting shift dress with ladder lace accents, a split neckline, and handy hip pockets. Made from garment-dyed organic cotton and hemp for soft, everyday style.

XS	S	M	L	XL	XXL
----	---	---	---	----	-----

Product Details



- 70 organic cotton / 30 hemp slub jersey

Key Features

- 37" length
- Ladder lace details
- Hip pockets
- Split neck
- Garment dyed



27 Black



122 Gibraltar Sea



623 Lemon Curry



998 Olivine

Cottage Top | M23695DT

Smocked yokes, a ruffled split neck, and sweet vintage charm. Made from soft organic cotton jersey with a hint of stretch.

XS	S	M	L	XL	XXL
----	---	---	---	----	-----

Product Details



- 95 organic cotton / 5 spandex single jersey
- Made in a Fair Trade Certified™ factory
- New & improved Essex Top

Key Features

- Smocked front and back yokes
- Split neck with small ruffle collar



122 Gibraltar Sea



998 Olivine



Back View

Cottage Dress | P89595DT

A playful tank dress with a smocked waist, hip pockets, and a sweet ruffled split neckline. Made from soft organic cotton jersey with a hint of stretch for all-day comfort.

XS	S	M	L	XL	XXL
----	---	---	---	----	-----

Product Details



- 95 organic cotton / 5 spandex single jersey
- Made in a Fair Trade Certified™ factory

Key Features

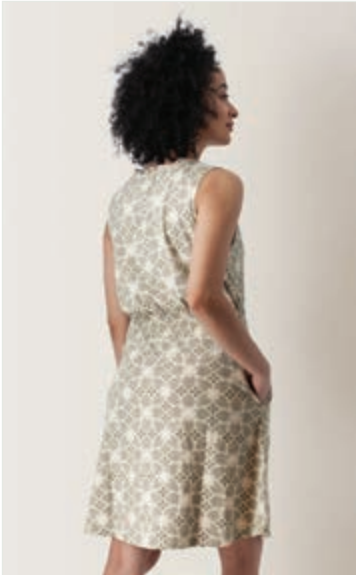
- 38" length
- Split neck with small ruffle neck trim
- Smocked waist
- Hip pockets



122 Gibraltar Sea



998 Olivine



Back View

Airy Top | M24068

A lightweight mixed media top with knit body and airy gauze sleeves finished in an embroidered schiffli edge. Made with recycled and organic cotton for a feel-good fit and easy summer style.

XS	S	M	L	XL	XXL
----	---	---	---	----	-----

Product Details



- 100% recycled cotton jersey + 100% organic cotton schiffli
- Made in a Fair Trade Certified™ factory

Key Features

- Crinkle gauze sleeves with schiffli border



03 White



27 Black



122 Gibraltar Sea



Back View

Airy Dress | P88456

A tiered silhouette with sweetheart neckline and delicate schiffli trim. Made from lightweight organic cotton gauze for a soft and floaty feel.

XS	S	M	L	XL	XXL
----	---	---	---	----	-----

Product Details



- 100% organic cotton gauze + schiffli
- Made in a Fair Trade Certified™ factory

Key Features

- 38" length
- Crinkle gauze and schiffli
- Sweetheart neckline
- Schiffli details on sleeves and sweep
- Hip pockets



27 Black



122 Gibraltar Sea



Back View

Margot Top | J309100

Featuring a modified mandarin collar, pleated front placket, and pichoting trim—it's your go-to for days when you want to feel just a little more pulled together.

XS	S	M	L	XL	XXL
----	---	---	---	----	-----

Product Details



- 100% TENCEL™ modal twill
- Made in a Fair Trade Certified™ factory

Key Features

- Relaxed fit
- Cap sleeves with modified mandarin collar
- Partial button front placket with pleating and pichoting details
- Garment dyed (except white)



03 White



453 Indigo



998 Olivine



Back View

Mariposa Top | J30515DQ

A fresh take on a customer favorite, this raglan-sleeve top features all-over floral embroidery, a sweet ruched collar, and a feminine split neckline.

XS	S	M	L	XL	XXL
----	---	---	---	----	-----

Product Details



- 100% organic cotton one-way slub cross-weave
- Made in a Fair Trade Certified™ factory
- New & improved Lorena Top

Key Features

- Raglan sleeves
- All-over floral embroidery
- Mini ruched collar with split neck
- Side slits at hem



03 White



122 Gibraltar Sea



Back View

Splendor Long Sleeve Top | J32677DN

A lightweight button-down made from breathable organic cotton with subtle texture. An all-over sun washed print gives this classic shirt a fresh personality.

XS	S	M	L	XL	XXL
----	---	---	---	----	-----

Product Details



- 100% organic cotton slub weave
- Made in a Fair Trade Certified™ factory

Key Features

- Full button front
- All-over print



27 Black



1023 Crystal Blue



Back View

Caspian Top | J301153

A lightweight long sleeve top with a flattering Y-neck, gentle ruching at the shoulders, and a soft shirttail hem. Made from an airy blend of modal and organic cotton seersucker.

XS	S	M	L	XL	XXL
----	---	---	---	----	-----

Product Details



- 60 TENCEL™ modal / 40 organic cotton seersucker
- Made in a Fair Trade Certified™ factory

Key Features

- Y-neck
- Ruching on shoulders
- Elasticized cuffs
- Shirttail hemline



03 White



27 Black



138 Cendre Blue



Back View

Kelford Short | K15656

Easygoing and beach-ready, these paperbag-style shorts feature a 5" inseam, drawstring waist, and patch pockets. Made from lightweight organic cotton gauze with a fixed rolled hem.

XS	S	M	L	XL	XXL
----	---	---	---	----	-----

Product Details



- 100% organic cotton gauze
- Made in a Fair Trade Certified™ factory

Key Features

- 5" inseam with fixed rolled hem
- Paperbag style, mid-rise
- Drawstring at waist
- Front and back patch pockets



27 Black



122 Gibraltar Sea



607 Granite Green



Back View

Kelford Full Button Long Sleeve | J30856

Easy and effortless. This lightweight button-up is made from breathable organic cotton gauze and features raglan sleeves and a shirttail hem for a relaxed, throw-it-on-and-go kind of vibe.

XS	S	M	L	XL	XXL
----	---	---	---	----	-----

Product Details



- 100% organic cotton gauze
- Made in a Fair Trade Certified™ factory

Key Features

- Full button front
- Raglan sleeves
- Shirttail hemline



03 White



27 Black



122 Gibraltar Sea



607 Granite Green

Midsummer Dress | P88856

An easygoing mixed media dress with a soft knit top and flowy crinkle gauze skirt. Designed with raglan sleeves, hip pockets, and side slits for breezy summer days.

XS	S	M	L	XL	XXL
----	---	---	---	----	-----

Product Details



- 100% organic cotton gauze + 95 organic cotton / 5 spandex single jersey
- Made in a Fair Trade Certified™ factory

Key Features

- 49.5" midi length
- Knit top with raglan sleeves
- Crinkle gauze skirt
- Two side slits
- Hip pockets



27 Black



122 Gibraltar Sea



607 Granite Green



Back View



The Leni Collection

The Leni Collection blends everyday comfort with timeless style. With breezy linen and soft organic cotton, these pieces were made for warm days and easy dressing. Clean lines, subtle pleats, and thoughtful tailoring give each style a relaxed structure that moves with you. Whether you're headed to the farmers market or catching up over coffee, Leni keeps things simple, breathable, and effortlessly put together.

Features a high-rise fit with a button front, grown-on waistband, and front pleats. A classic lightweight style.

0	2	4	6	8
10	12	14	16	

Product Details



- *Striped* - 100% organic cotton slub
- *Solid* - 100% linen
- Made in a Fair Trade Certified™ factory

Key Features

- High rise
- 9" inseam
- Button front and grown-on waistband
- Front pleats and back darts for added shape
- Quarter-top pockets and back drop-in pockets

Leni Bermuda Short | K16397

Leni Solid Bermuda Short | K163426



K16397 • FS59 Gibraltar Sea



K16397 • FS49 Olive



K163426 • 122 Gibraltar Sea



K163426 • 336 Natural

Leni Jacket | 0312426

A lightweight jacket for effortless, laid-back style, with its airy 100% linen fabric and mandarin collar.

XS	S	M	L	XL	XXL
----	---	---	---	----	-----

Product Details



- 100% linen
- Made in a Fair Trade Certified™ factory

Key Features

- 24" length
- Mandarin collar
- Full button front closure
- Two flap chest pockets and two welt hip pockets
- Side vents and back seaming



122 Gibraltar Sea



336 Natural



Back View

Offers a high-rise fit with a button-front, grown-on waistband, and a trendy wide-leg silhouette for effortless style.

0	2	4	6	8
10	12	14	16	

Product Details



- *Striped* - 100% organic cotton slub
- *Solid* - 100% linen
- Made in a Fair Trade Certified™ factory

Key Features

- High rise
- 26" inseam with 23.5" leg opening
- Button front and grown-on waistband
- Front pleats and back darts for added shape
- Quarter-top pockets and back drop-in pockets

Leni Wide Leg Ankle Pant | L25897

Leni Solid Wide Leg Ankle Pant | L258426



L25897 • FS59 Gibraltar Sea



L25897 • FS49 Olive



L258426 • 122 Gibraltar Sea



L258426 • 336 Natural

Cali Dress | P89499

A lightweight tank dress with a subtle fit-and-flare shape, side pockets, and effortless charm. Made from a soft blend of organic cotton and TENCEL™ Modal with just the right stretch.

XS	S	M	L	XL	XXL
----	---	---	---	----	-----

Product Details



- 57 organic cotton / 38 TENCEL™ modal / 5 elastane slub single jersey

Key Features

- 38" length
- Slight fit & flare shape
- Hip pockets



DS64 Pomegranate



DU38 Dark Blue



Back View

Tulsi Midi Shirdress | P890100

This midi shirdress brings laid-back structure to your everyday. Effortless from top to bottom—just add sandals and go.

XS	S	M	L	XL	XXL
----	---	---	---	----	-----

Product Details



- 100% TENCEL™ modal twill
- Made in a Fair Trade Certified™ factory

Key Features

- 47.5" midi length
- Full button front
- Front utility pockets
- Fixed rolled up sleeves with non-functional tab
- Garment dyed



27 Black



453 Indigo



998 Olivine



Back View

Celebration Midi Dress | P88703DP

Made for warm nights, sunny afternoons, and spontaneous twirls. This lightweight midi dress brings a touch of joy to everyday moments with soft cotton poplin, delicate details, and an easy, feel-good fit.

XS	S	M	L	XL	XXL
----	---	---	---	----	-----

Product Details



- 100% organic cotton poplin
- Made in a Fair Trade Certified™ factory

Key Features

- 43" length
- Full button front with elastic waist
- Ruffle tier at sweep
- Ladder lace details
- Lined



122 Gibraltar Sea



423 High Rise



Back View

Lottie Top | N534664

Delicate and dreamy. This airy pointelle knit adds just the right touch of texture, while soft ribbed trim keeps things easy and sweet.

XS	S	M	L	XL	XXL
----	---	---	---	----	-----

Product Details



- 100% organic cotton knit, 12gg
- Made in a Fair Trade Certified™ factory

Key Features

- Lightweight, dot pointelle knit
- Mini ribknit details at neck and sleeve openings



03 White



27 Black



607 Granite Green



623 Lemon Curry

Francesca Top | J284282

Soft, floaty, and full of charm—this cap-sleeve tank has just the right amount of shoulder detail and a flattering V-neck to make it feel special without trying too hard.

XS	S	M	L	XL	XXL
----	---	---	---	----	-----

Product Details



- 100% LENZING™ ECOVERO™ viscose, high twist crepe
- Made in a Fair Trade Certified™ factory

Key Features

- V-neck tank with cap sleeve
- Slight ruching on front shoulders
- Back yoke



DH03 White



DH27 Black



Back View

Francesca Shift Dress | P897282

This chic shift dress brings a hint of structure with its mandarin collar and button-front yoke, while the relaxed shape and hip pockets keep things effortlessly functional.

XS	S	M	L	XL	XXL
----	---	---	---	----	-----

Product Details



- 100% LENZING™ ECOVERO™ viscose, high twist crepe
- Made in a Fair Trade Certified™ factory

Key Features

- 38" length
- Mandarin collar
- Front yoke with button closure
- Hip pockets



DH03 White



DH27 Black



Back View

Francesca Skirt | P392282

This pull-on skirt flows effortlessly with soft ruffle tiers and a smocked waist for a feel-good fit. Finished with handy pockets and a playful spirit that's ready for anything.

XS	S	M	L	XL	XXL
----	---	---	---	----	-----

Product Details



- 100% LENZING™ ECOVERO™ viscose, high twist crepe
- Made in a Fair Trade Certified™ factory

Key Features

- 19.5" length
- Smocked waist
- Slight ruffle tiers at bottom
- Two hip pockets



DH03 White



DH27 Black



Back View



Francesca Shift Dress, pg. 55



Summertime Tank, pg. 41

Leni Wide Leg Ankle Pant, pg. 51



Celebration Midi Dress, pg. 53



Cali Dress, pg. 52



PRODUCT

2026

INDEX

tank tops

M22302DF	Bali Tank.....	pg. 12
J32015IU	Festival Tank.....	pg. 16
M169135	Simone Tank Top.....	pg. 42
M24457	Solana Tank.....	pg. 40
N527664	Summertime Tank.....	pg. 41

short sleeve tops

M24068	Airy Top.....	pg. 45
J30787 • J30787P	Beachcomber Short Sleeve.....	pg. 18
J282841	Breezy Short Sleeve Top.....	pg. 21
J31877DK	Cassia Top.....	pg. 16
M23695DT	Cottage Top.....	pg. 44
M230102	Endless Summer Top.....	pg. 13
M14591DR	Farley Tee.....	pg. 41
J284282	Francesca Top.....	pg. 54
M23199	Isla Top.....	pg. 12
N534664	Lottie Top.....	pg. 54
J309100	Margot Top.....	pg. 46
J30515DQ	Mariposa Top.....	pg. 46
M24291DI	Meadows Tee.....	pg. 13
M25157	Solana Tee.....	pg. 40
J316282	Sorrento Top.....	pg. 23

long sleeve tops & layers

O161442	Arden V2 Jacket.....	pg. 31
J31287 • J31287P	Beachcomber Long Sleeve.....	pg. 19
N538664	Bindi Beach Top.....	pg. 15
J301153	Caspian Top.....	pg. 47
O307219	Delta Jacket.....	pg. 15
M21595	Juni 3/4 Sleeve Tee.....	pg. 14
J30856	Kelford Full Button Long Sleeve.....	pg. 48
J29877	Laken Top.....	pg. 17
O312426	Leni Jacket.....	pg. 51
M229135	Simone 3/4 Sleeve Top.....	pg. 43
J32677DN	Splendor Long Sleeve Top.....	pg. 47
N521664	Summer Breeze Long Sleeve.....	pg. 14

dresses

P88603DO	Abloom Shirtdress.....	pg. 25
P88456	Airy Dress.....	pg. 45
P900841	Breezey Dress.....	pg. 20
P89499	Cali Dress.....	pg. 52
P88703DP	Celebration Midi Dress.....	pg. 53
P89595DT	Cottage Dress.....	pg. 44
P882102	Endless Summer Dress.....	pg. 24
P897282	Francesca Shift Dress.....	pg. 55
P87856FG	Good Vibes Dress.....	pg. 24
P88856	Midsummer Dress.....	pg. 49
P881135	Simone Dress.....	pg. 43
P902282	Sorrento Dress.....	pg. 22
P890100	Tulsi Midi Shirtdress.....	pg. 52

pants

L200442	Arden Crop Pant.....	pg. 31
L260442	Arden Wide Leg Utility Pant.....	pg. 34
L228459	Ballard Ankle Pant.....	pg. 35
L255841	Breezy Pant.....	pg. 21
L258426	Leni Solid Wide Leg Ankle Pant.....	pg. 51
L25897	Leni Wide Leg Ankle Pant.....	pg. 51
L235282	Sorrento Pant.....	pg. 23

shorts

K110442	Arden V2 Short.....	pg. 32
K158459	Ballard Bermuda Short.....	pg. 35
K136841	Breezy Short.....	pg. 21
K152442	Halifax Short.....	pg. 34
K15656	Kelford Short.....	pg. 48
K16397	Leni Bermuda Short.....	pg. 50
K163426	Leni Solid Bermuda Short.....	pg. 50

skirts & skorts

P360442	Arden V2 Skort.....	pg. 33
P392282	Francesca Skirt.....	pg. 55

All sales by Sportif Wholesale or Aventura Clothing, referred to hereinafter as “Sportif”, are exclusively governed by and subject to the Terms and Conditions contained herein. Requests which add to, vary from or conflict with these Terms & Conditions are expressly rejected and can only be made effective in a written document signed and dated by an officer of Sportif.

Orders are subject to credit approval by Sportif’s Banking Factor. Standard Terms are N30 and effective from the date of invoice. Advance payment may be required in some cases. Preseason discounts are issued at the time of invoice. Discounts are extended to merchandise only and not to shipping and handling. We reserve the right to ship orders up to 30 days in advance of the requested ship date. Prices are subject to change without notice. We reserve the right to accept or reject any order.

ORDER CANCELLATIONS/REVISIONS

Order cancellations or revisions equal to or more than 20% must be made through regional sales representative and may result in the loss of preseason terms and discount. All cancellations and revisions must be requested in writing.

CANCELLATIONS WILL NOT BE ACCEPTED AFTER 60 DAYS FROM ORDER SUBMISSION DATE.

CLAIMS

Claims against shipments must be made in writing (via mail, fax or email) within 15 days from receipt of goods. Warranty returns will be repaired or replaced at Sportif’s option.

RETURNS

All returns, including defective merchandise, must be preauthorized by your account manager within 90 days. Unapproved returns will be refused at the Dealer’s expense. Approved returns that are not defective or damaged must be received by Sportif in a condition conducive for resale. Returns may be subject to a 10% restocking fee.

SHIPMENTS

Standard shipping will be F.O.B. Sportif Wholesale, Inc., UPS Ground Service, prepaid and invoiced. All other shipping methods or special shipping instructions need to be clearly stated on your purchase order.

PAST DUE ACCOUNTS/COLLECTION

Past due accounts shall incur a service charge of 1.5% per month, or \$5.00, whichever is greater, for each outstanding invoice. Shipments will be withheld from accounts with past due invoices and/or other charges. Accounts that are more than 60 days past due may be turned over to a collection agency. Buyer agrees to pay the full cost and expense, including attorney’s fees incurred by Sportif Wholesale, Inc. for the collection of past due accounts.

EMPLOYEE PURCHASES/VIP PROGRAM

We offer discounts to full-time store employees. Please contact your sales rep or our customer service for details and authorization of our on-line Sales Associate Pro-Deal.

www.aventurab2b.com • 800-776-7843

2026

TERMS & CONDITIONS



Abloom Shirtdress, pg. 25

FIND YOUR REGIONAL SALES REP

NEW ENGLAND / MID-ATLANTIC

Maine, New Hampshire, Connecticut, Rhode Island,
Vermont, Massachusetts, New Jersey, Pennsylvania,
New York, Maryland, Delaware

Lisa Lombardi Keeley & Michael Keeley

PO BOX 248
Perkinsville, VT 05151
Lisa Cell: (203) 215-0485
Michael Cell: (802) 299-6622
Lisa E-mail: lisakeeley.lk@gmail.com
Michael E-mail: michaeljkeeley73@gmail.com

SOUTHEAST / MID-ATLANTIC

Alabama, Georgia, Florida, North & South Carolina,
West Virginia, Tennessee, Virginia

Paul Jones

701 41st Ave. South
North Myrtle Beach, SC 29582
Phone: (843) 457-7819
Email: pauljone@earthlink.net

MIDWEST - EAST

Indiana, Kentucky, Michigan, Ohio

Palisade Trading

Crystal Neely

618 Lone Oak Lane
Verona, WI 53593
Cell: (715) 410-7412
E-mail: crystal@palisadetrading.com

Ben Boynton

1176 Tenagra Way
Columbus, OH 43228
Cell: (909) 942-1729
E-mail: ben@palisadetrading.com
ben.a.boynton@gmail.com

MIDWEST - WEST

North & South Dakota, Minnesota, Nebraska, Kansas,
Missouri, Wisconsin, Illinois, Iowa, Upper Peninsula of
Michigan

Whitefish Trading Company

Bernie & Michelle Reisberg

2104 Kenwood Parkway
Minneapolis, MN 55405
Bernie Cell: (612) 281-6427
Michelle Cell: (763) 670-0272
Bernie E-mail: bernie@whitefishtrading.co
Michelle E-mail: michelle@whitefishtrading.co

HEARTLAND

Arkansas, Louisiana, Mississippi,
Oklahoma, Texas

Sigrid & Alan Quinn

2554 NW Marshall St., Unit A
Portland, OR 97210
Sigrid Cell: (206) 200-7578
Alan Cell: (503) 250-2680
Sigrid E-mail: sigridquinn66@gmail.com
Alan E-mail: alancquinn@aol.com

ROCKY MOUNTAIN

Colorado, W. Nebraska, New Mexico,
Utah, Montana, Wyoming, Idaho

Soni Miller

1571 E. Petunia Way
Sandy, UT 84092
Phone: (801) 572-3470
Cell: (801) 554-3212
E-mail: sonimiller18@gmail.com

WEST COAST / SOUTHWEST

Arizona, California, Nevada, Hawaii

Paige Ricciardi

3650 Lazarro Dr.
Carmel, CA 93923
Phone: (831) 238-2746
E-mail: paigekitson@yahoo.com

PACIFIC NORTHWEST

Washington, Oregon, Alaska

Sigrid & Alan Quinn

2554 NW Marshall St., Unit A
Portland, OR 97210
Sigrid Cell: (206) 200-7578
Alan Cell: (503) 250-2680
Sigrid E-mail: sigridquinn66@gmail.com
Alan E-mail: alancquinn@aol.com

CANADA REPS

EASTERN CANADA

Sally Adams

160 Tycos Dr., Suite 114
Toronto, Ontario, M6B 1W8
Phone: (416) 998-4729
Fax: (866) 568-5950
E-mail: sallyadamsagency@gmail.com

WESTERN CANADA

Blu l'd Sales by Victoria Inc.

Victoria Murray

#231 - 1951 Glen Drive
Vancouver, BC V6A 4J6
Office: (604) 682-3826
Cell: (604) 341-5450
E-mail: victoria@bluidsales.com



CLOTHING WITH CONSCIOUS ORIGINS

SPRING / SUMMER 2026

CORPORATE OFFICE

Sportif USA

1415 Greg St., Suite 101 • Sparks, NV 89431
Phone: 1-800-776-7843 • Fax: (888) 711-2808
E-mail: whsl@sportif.com

CANADA DISTRIBUTION

Sportables Fine Goods Limited

75 Shields Ct., Unit 2 • Markham, Ontario • Canada, L3R 9T4
Phone: 1-800-563-2746 Fax: (905) 305-1639
E-mail: info@sportables.ca

Visit us at www.aventurab2b.com

- Easy online ordering
- Check on the status of an order
- Browse products by season
- Get regular updates on inventory
- Shop closeouts
- Download our workbook



This workbook is printed with soy-based inks on 10% post-consumer waste paper certified by the Forest Stewardship Council to come from well-managed forests.